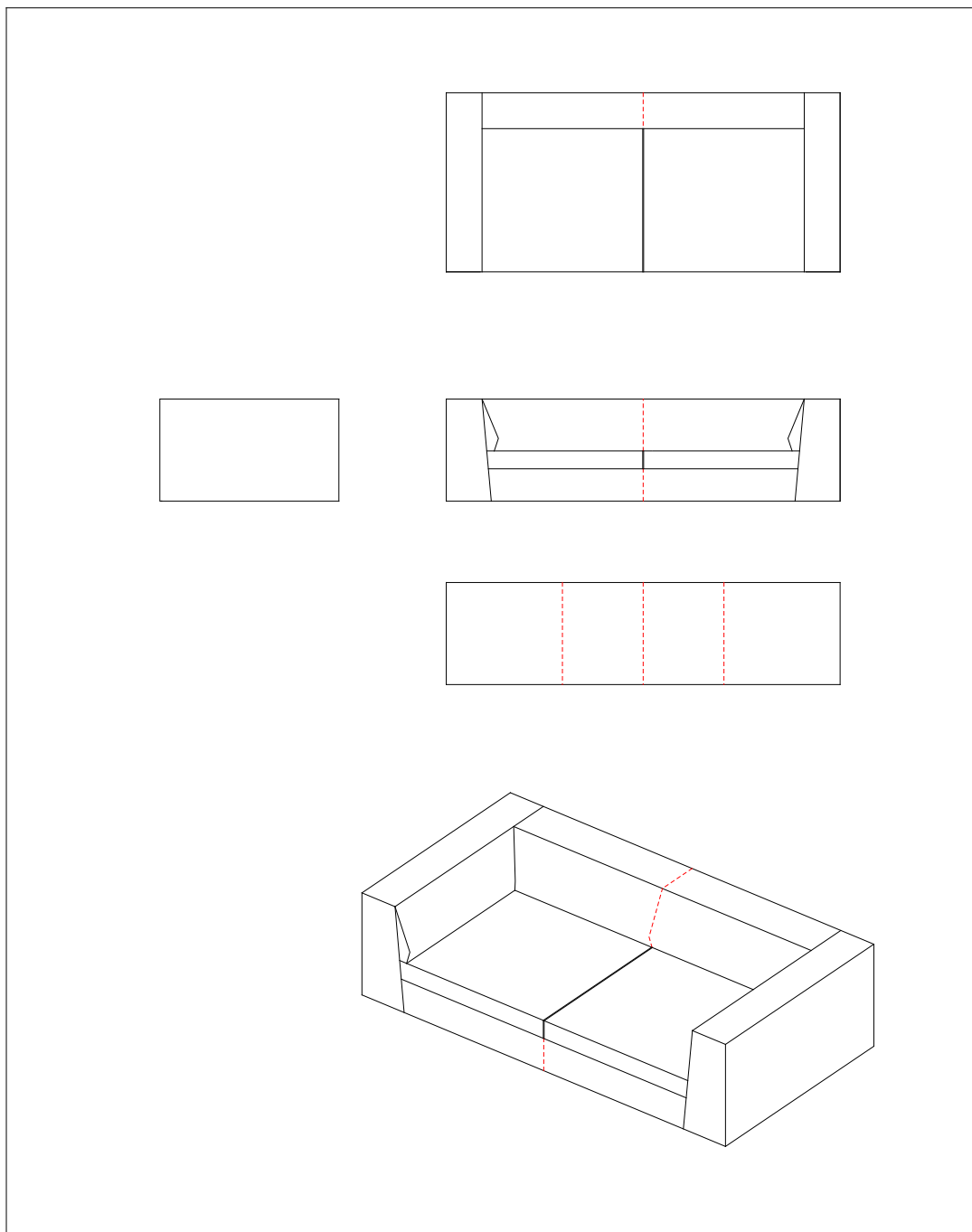
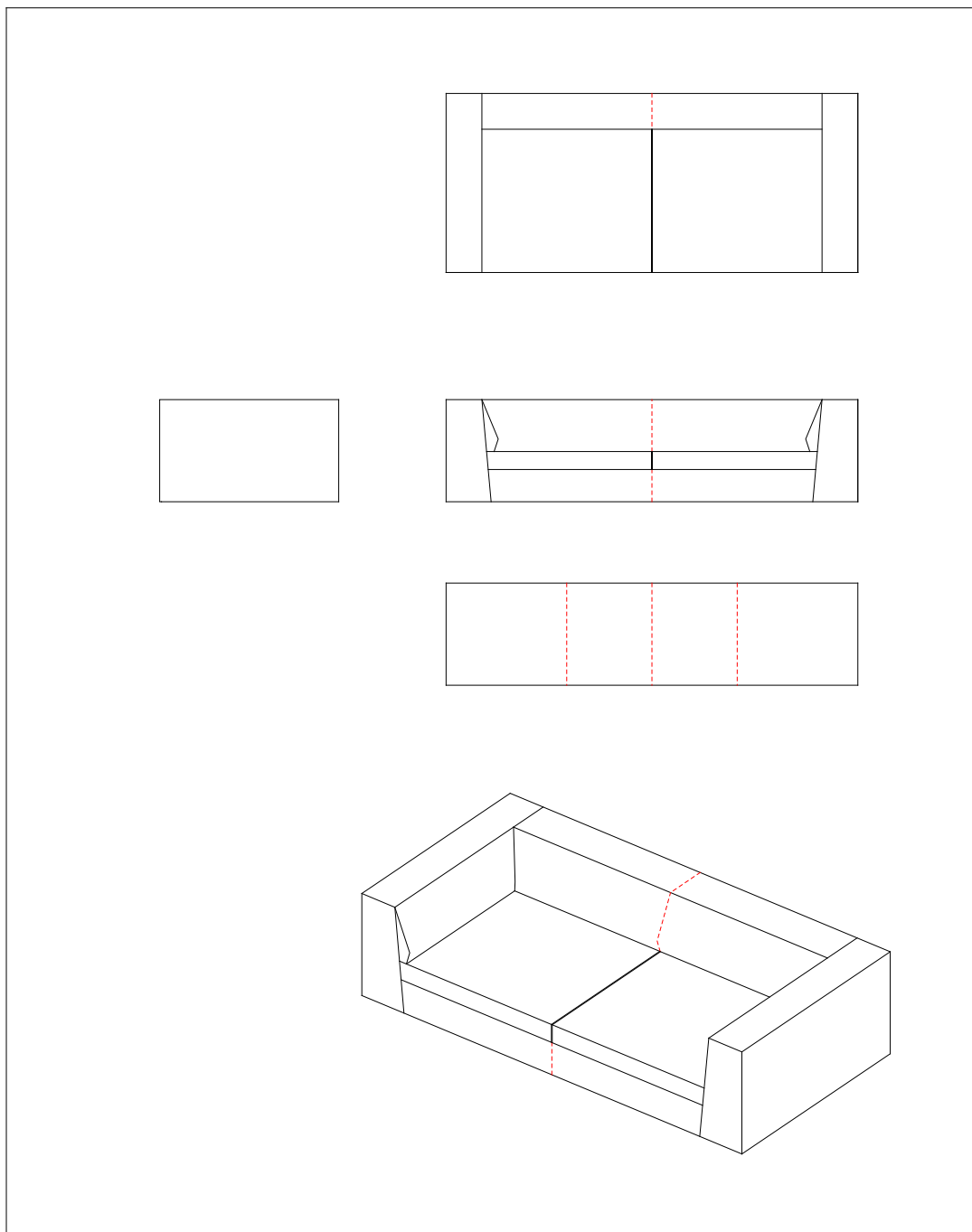


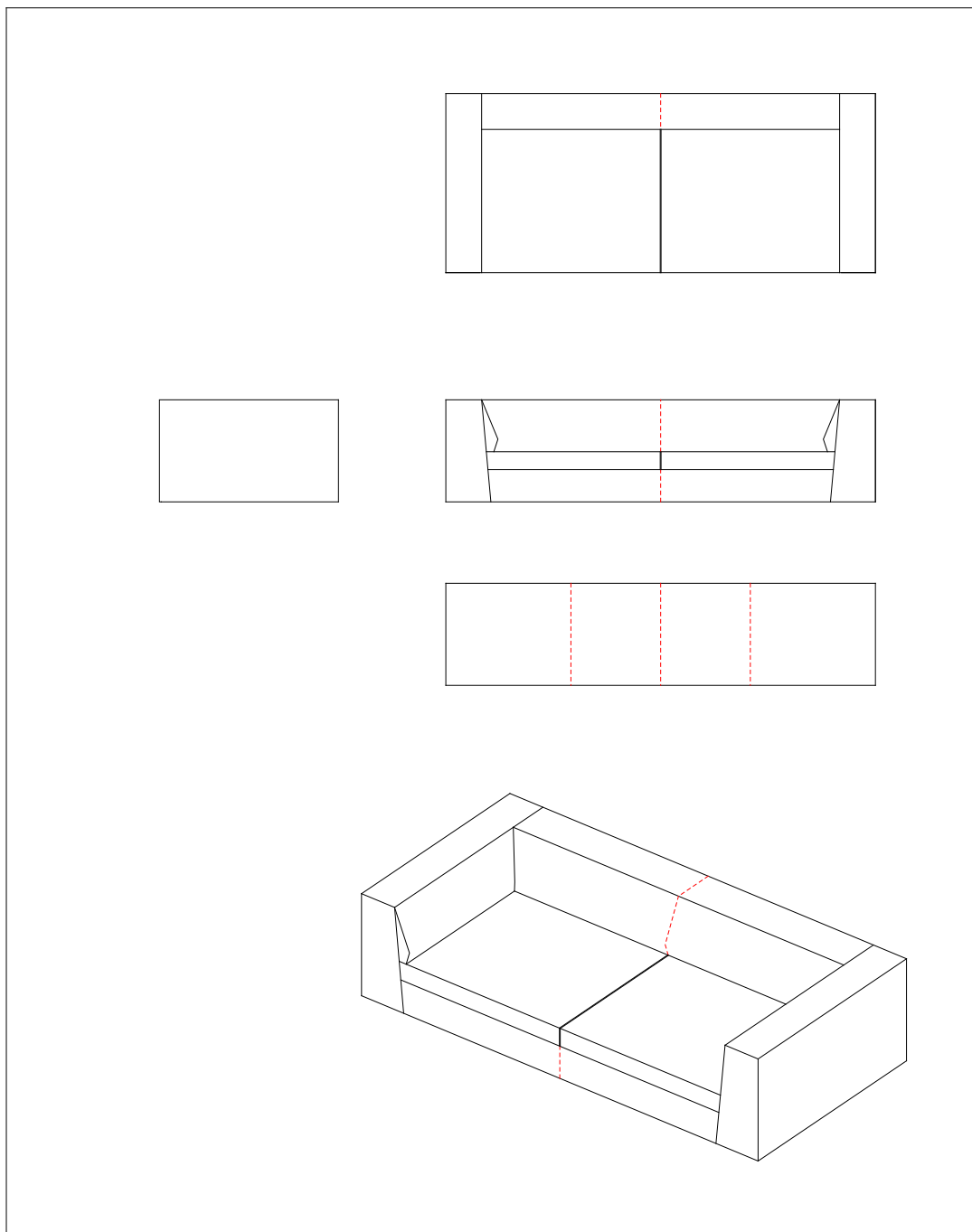
Stitching: Model SAVANNA, sofa,
220 x 100 cm in leather, #400-220



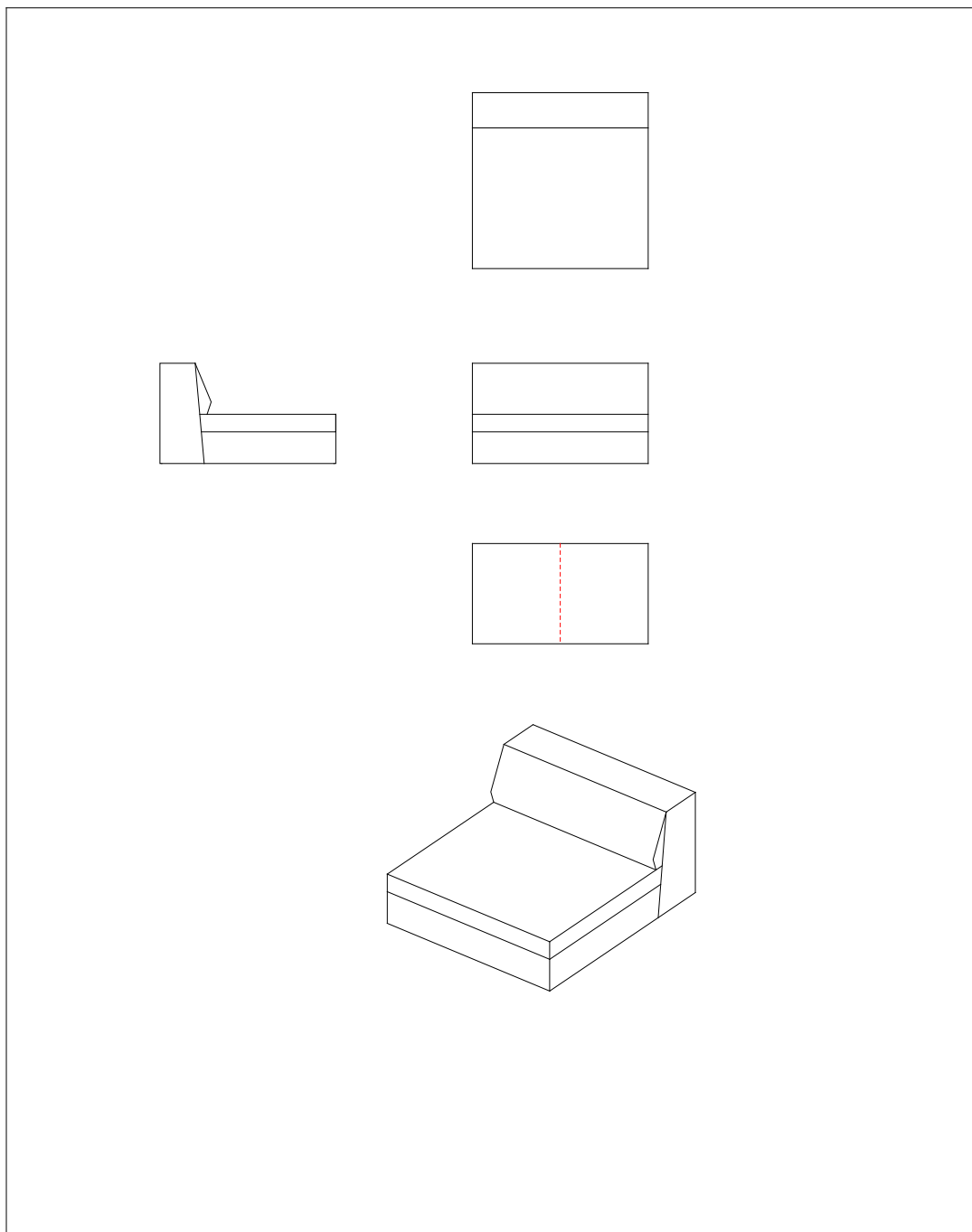
Stitching: Model SAVANNA, sofa,
230 x 100 cm in leather, #400-230



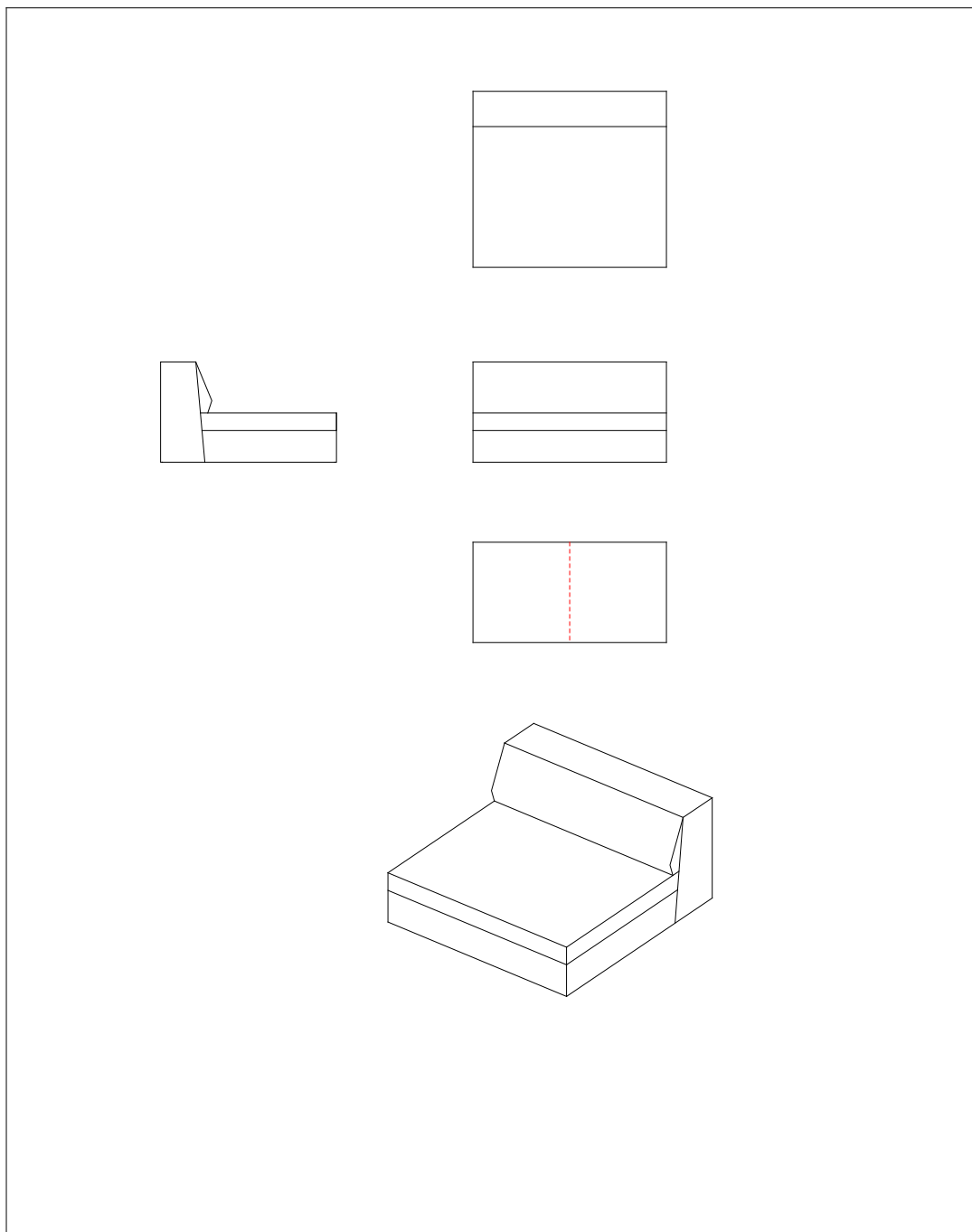
Stitching: Model SAVANNA, sofa,
240 x 100 cm in leather, #400-240



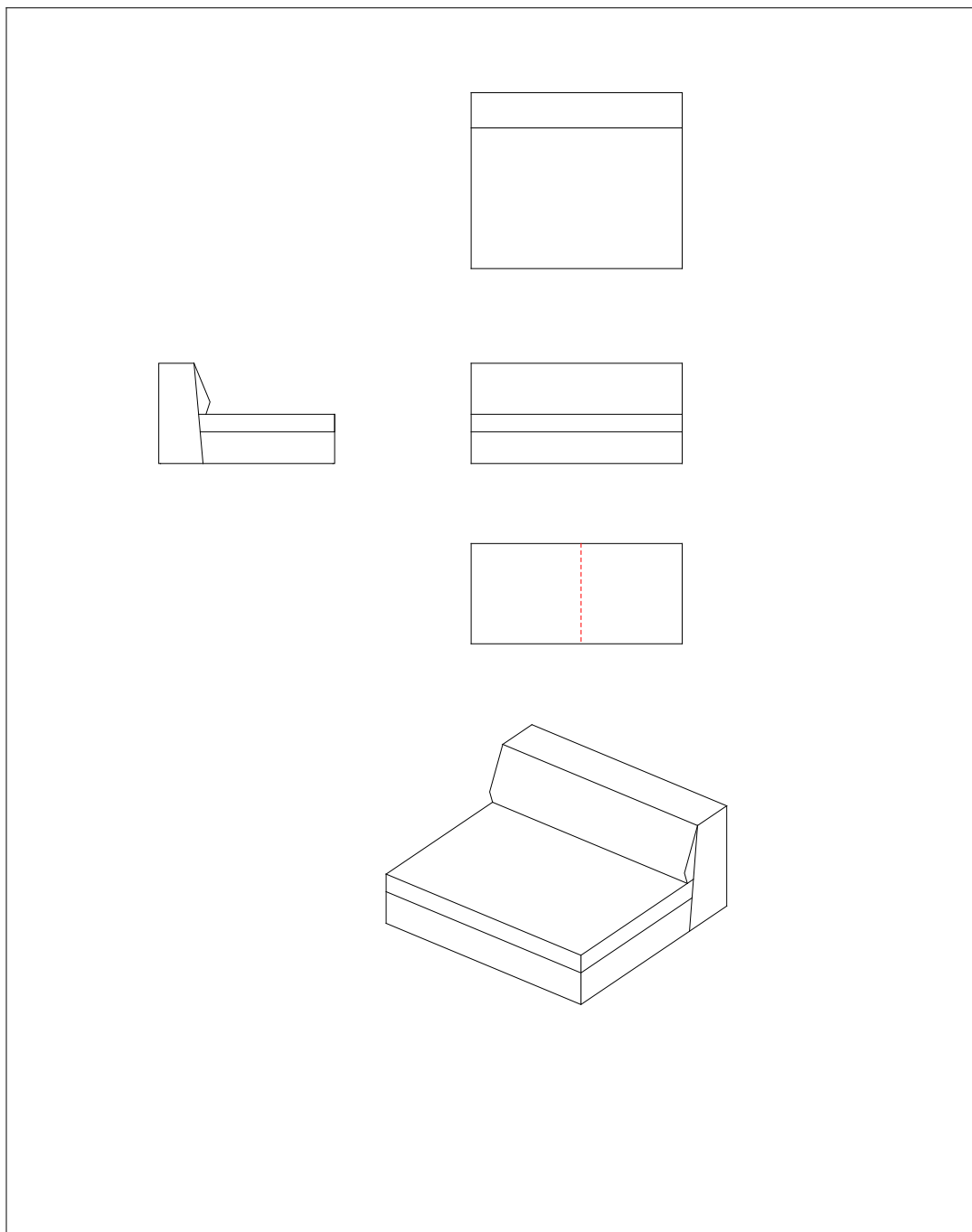
Stitching: Model SAVANNA, center section,
100 x 100 cm in leather, #401-100



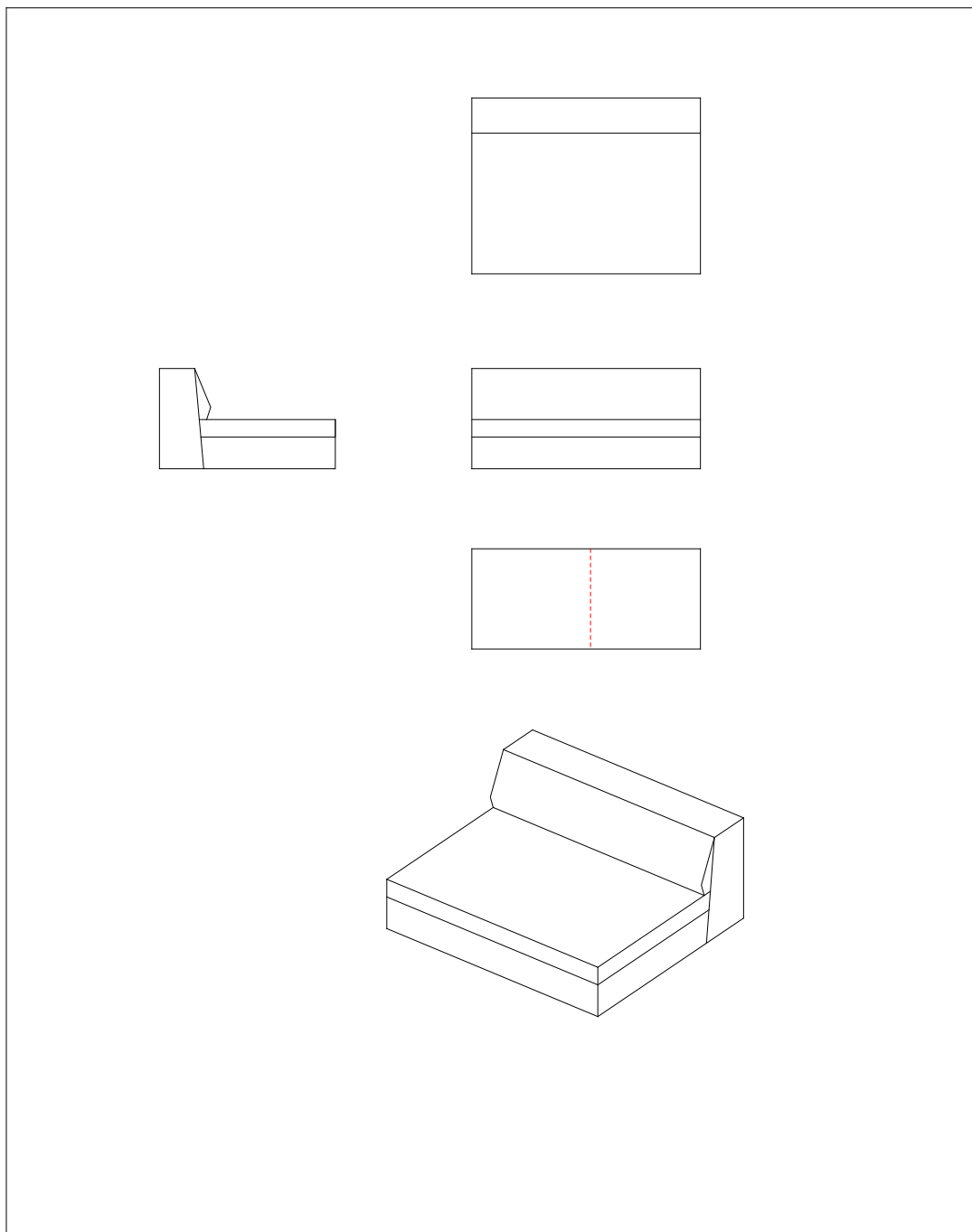
Stitching: Model SAVANNA, center section,
110 x 100 cm in leather, #401-110



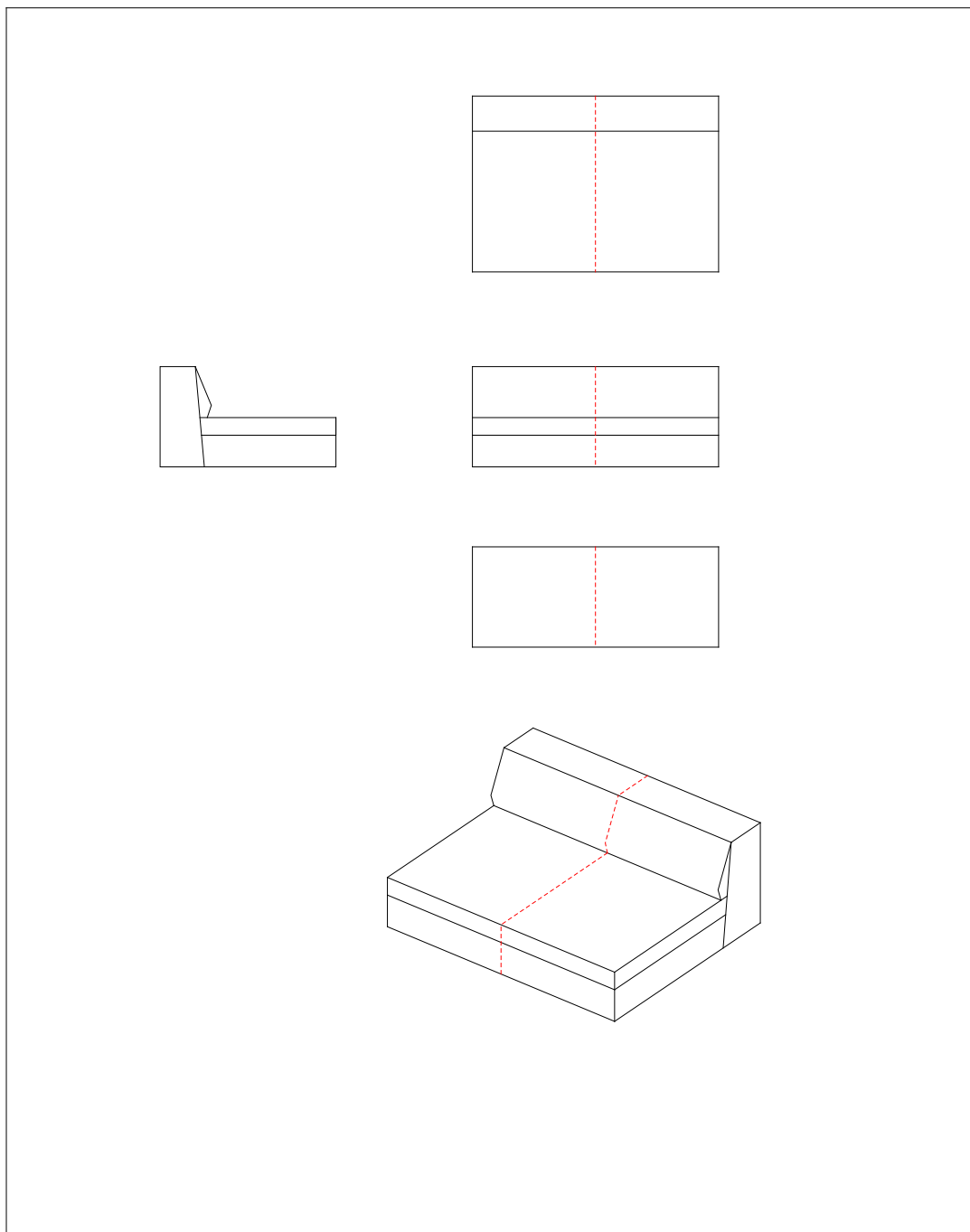
Stitching: Model SAVANNA, center section,
120 x 100 cm in leather, #401-120



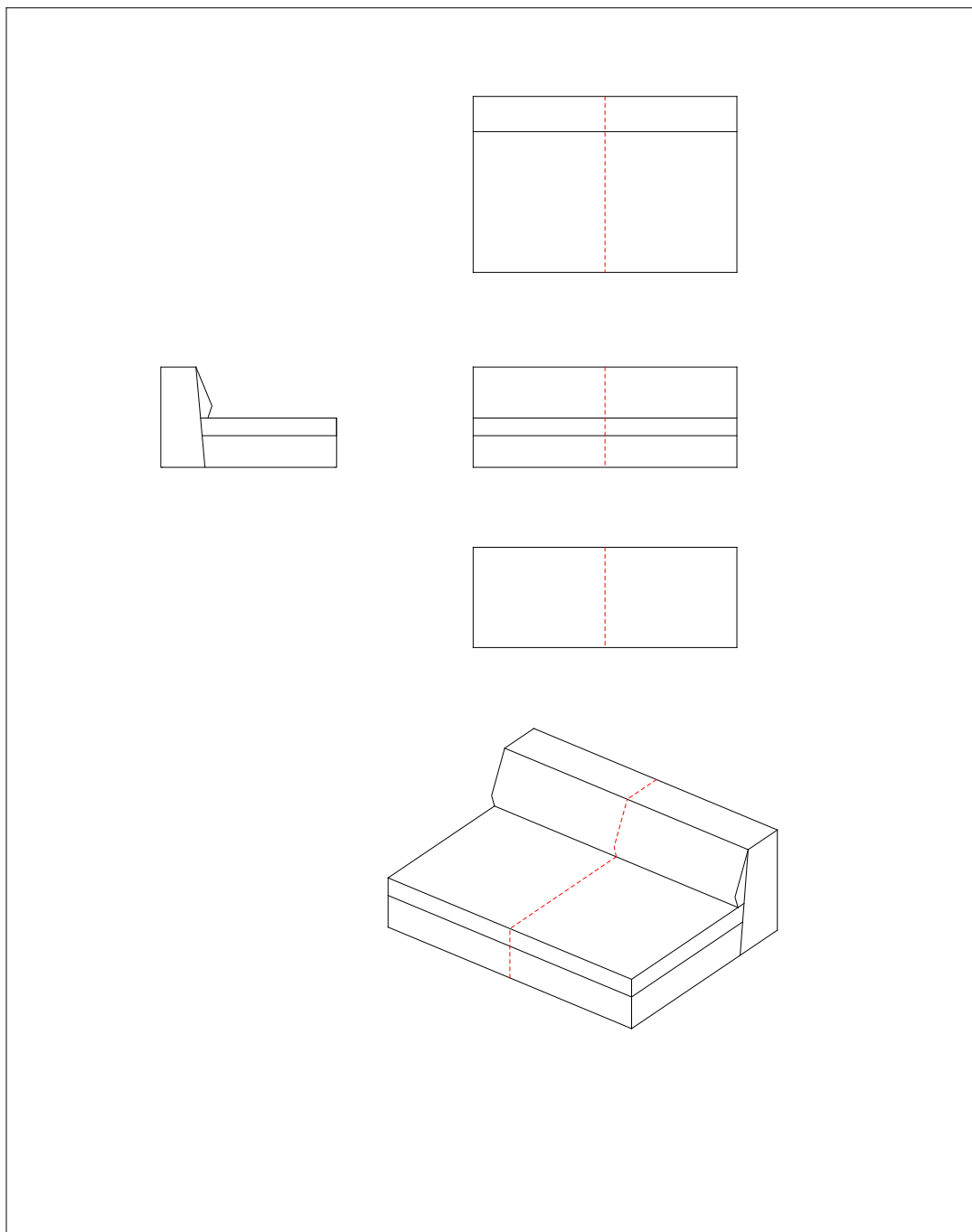
Stitching: Model SAVANNA, center section,
130 x 100 cm in leather, #401-130



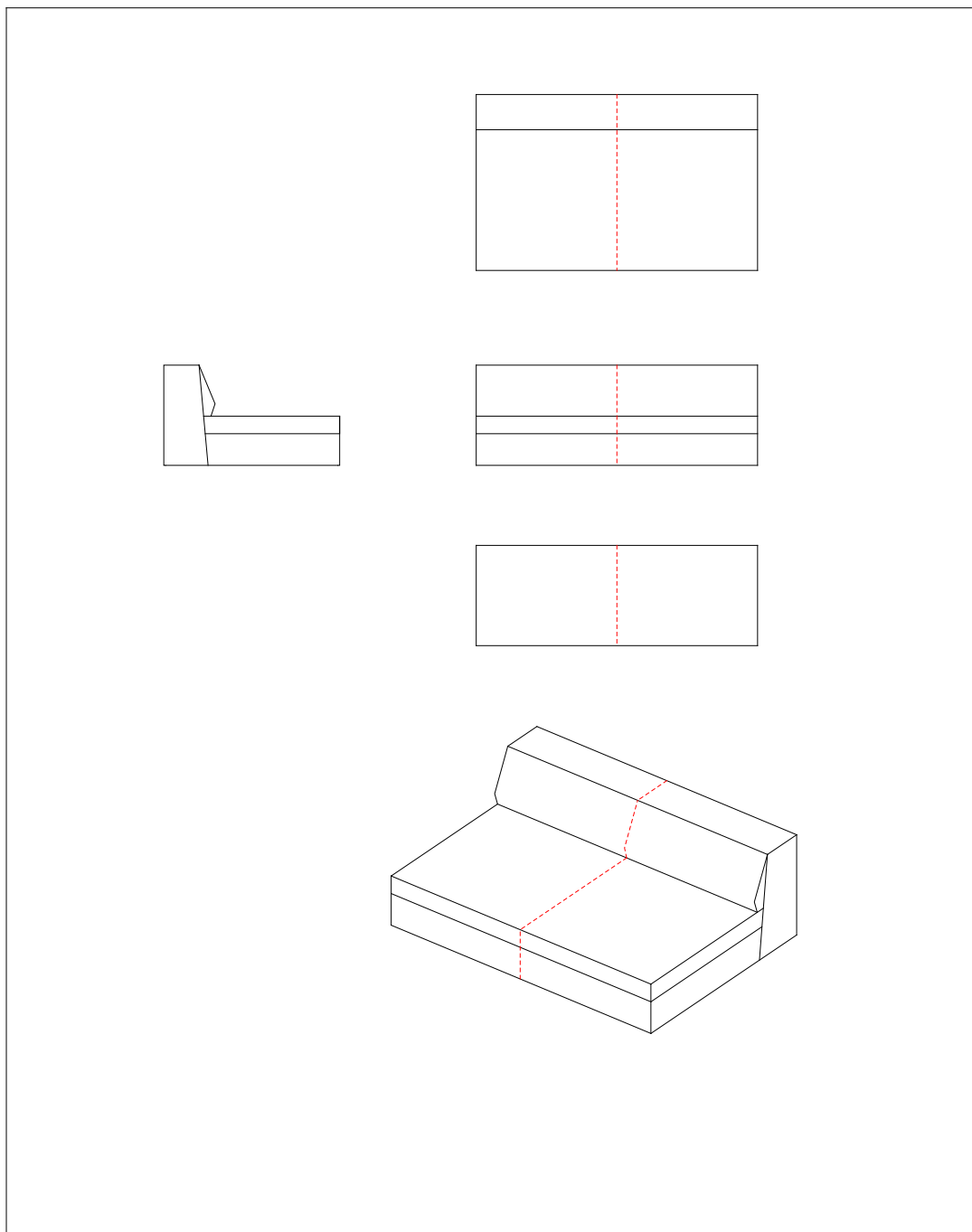
Stitching: Model SAVANNA, center section,
140 x 100 cm in leather, #401-140



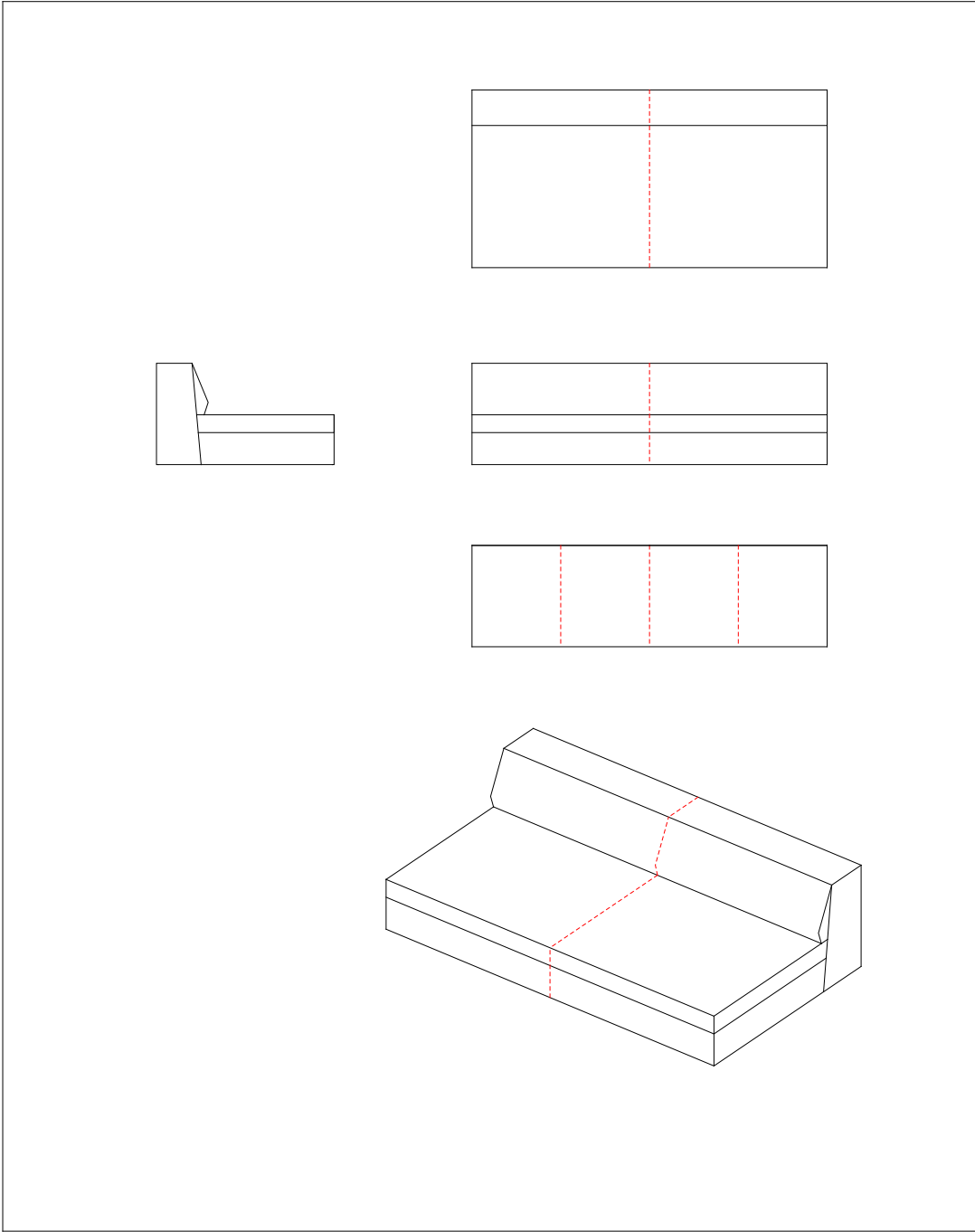
Stitching: Model SAVANNA, center section,
150 x 100 cm in leather, #401-150



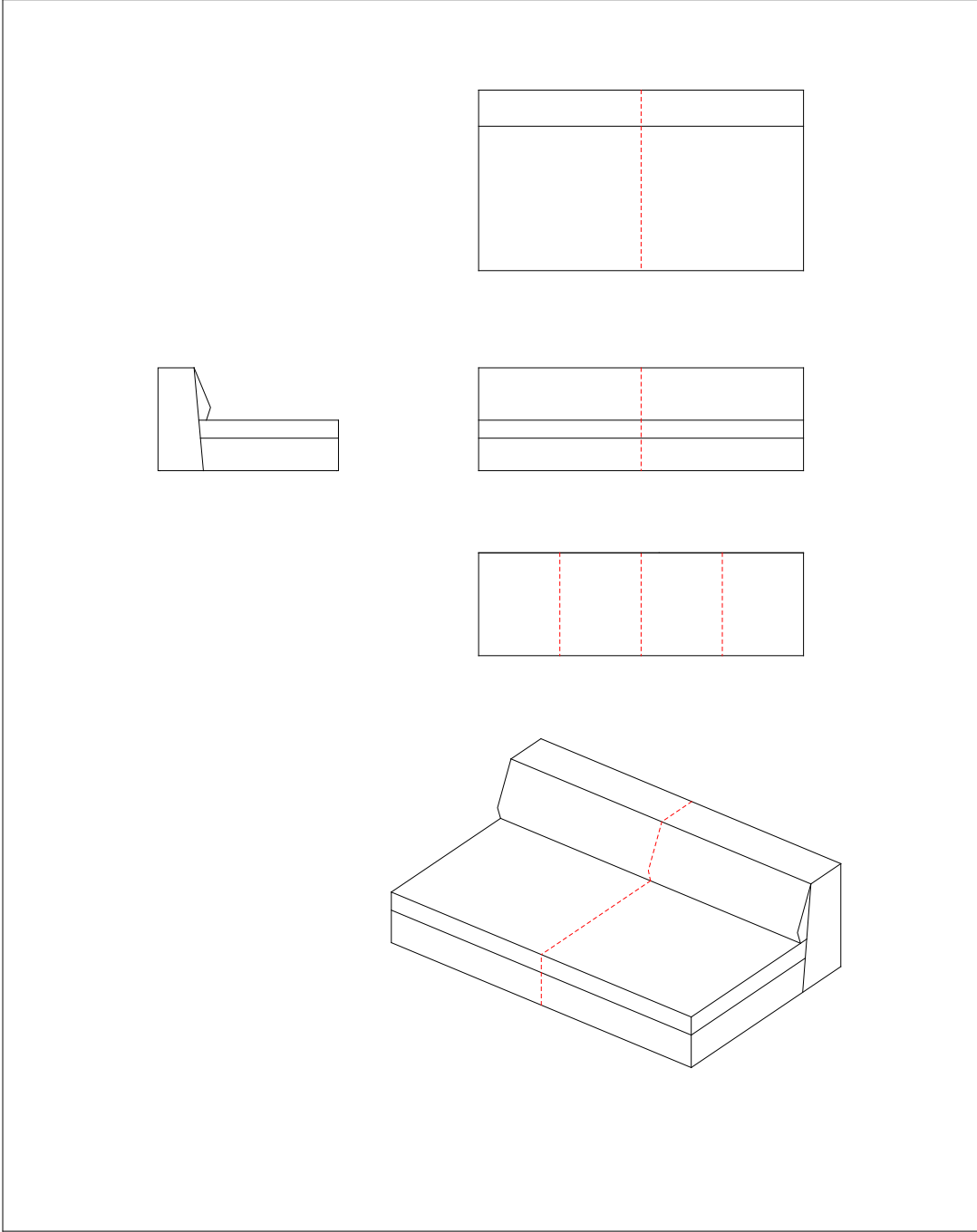
Stitching: Model SAVANNA, center section,
160 x 100 cm in leather, #401-160



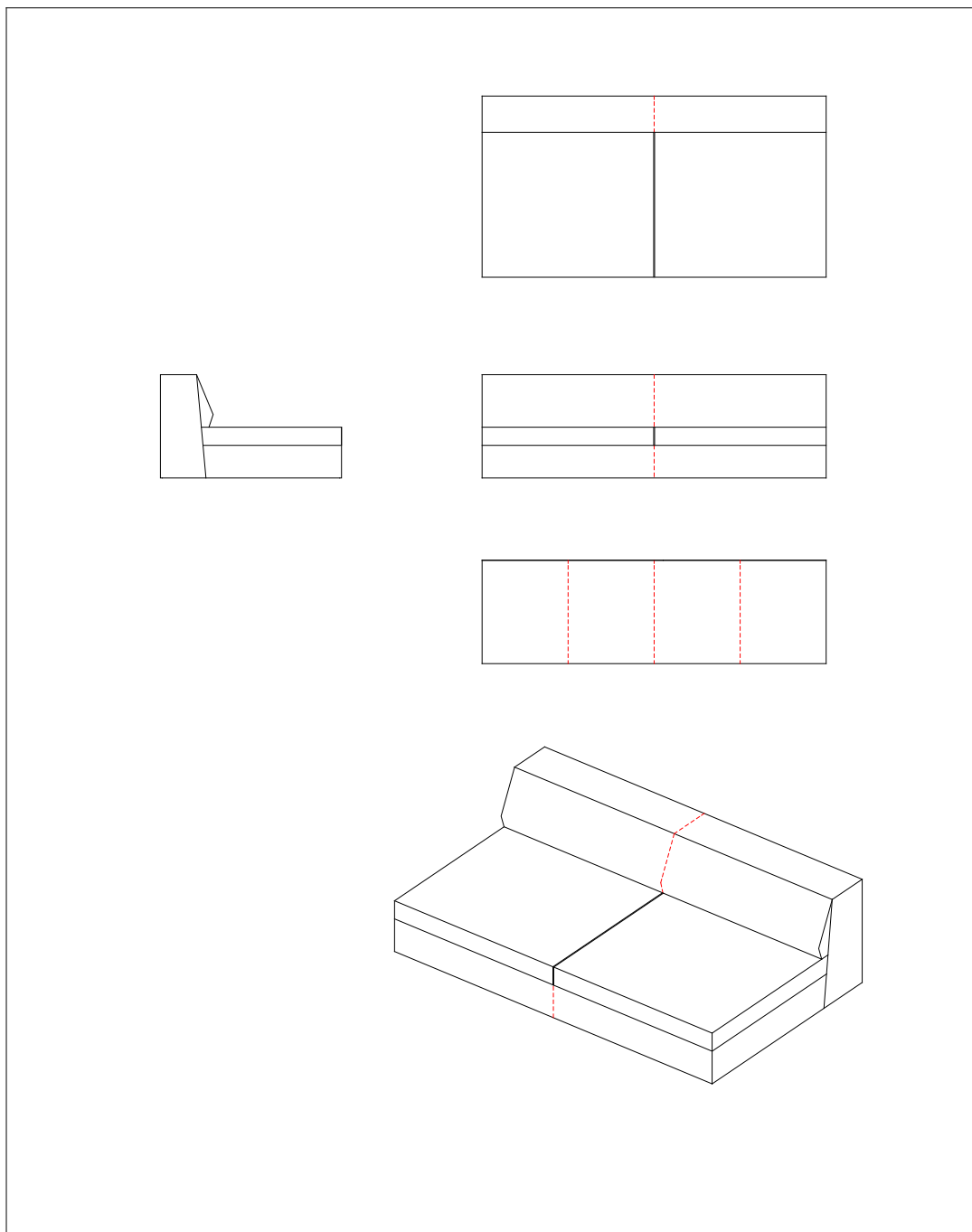
Stitching: Model SAVANNA, center section,
170 x 100 cm in leather, #401-170



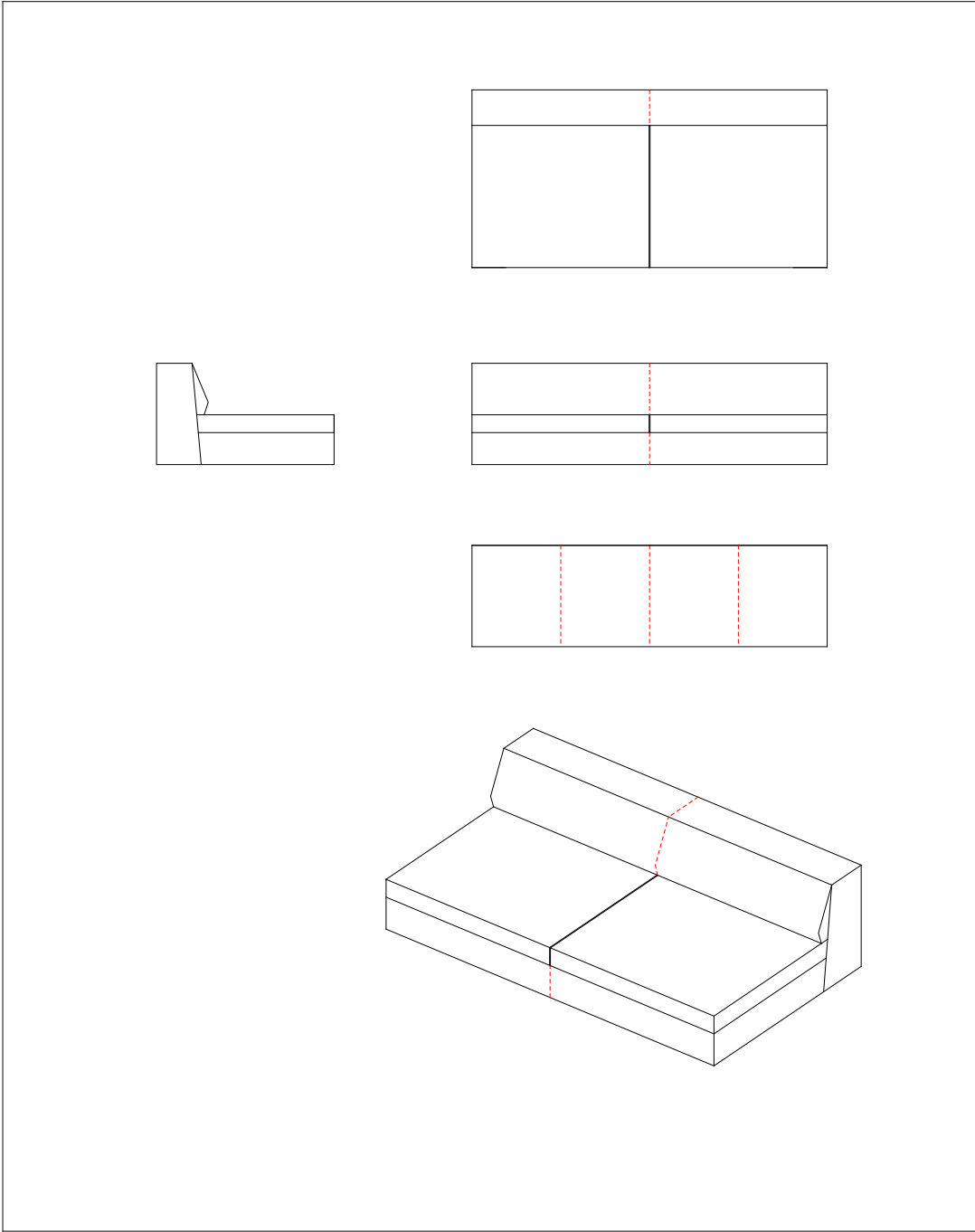
Stitching: Model SAVANNA, center section,
180 x 100 cm in leather, #401-180



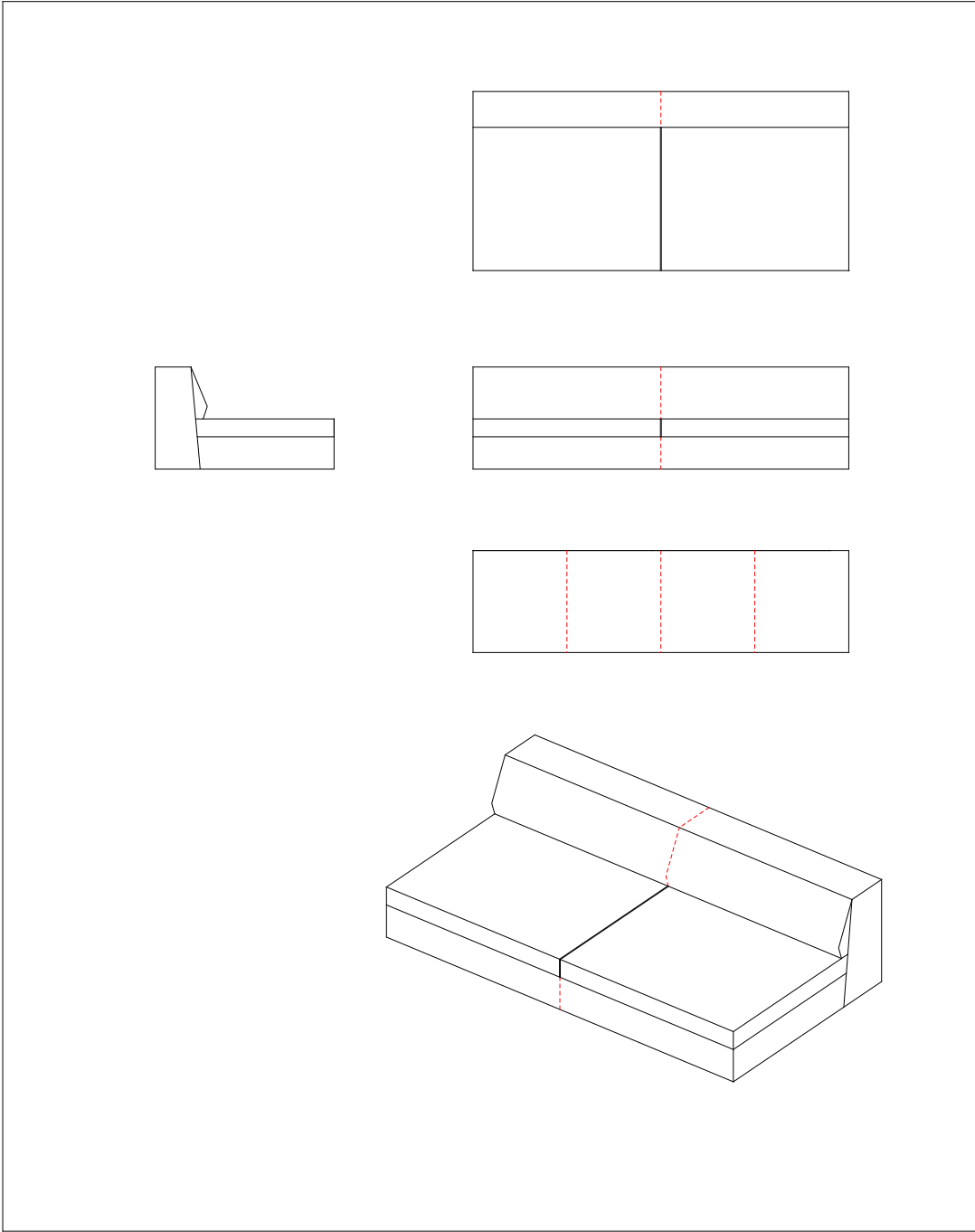
Stitching: Model SAVANNA, center section,
190 x 100 cm in leather, #401-190



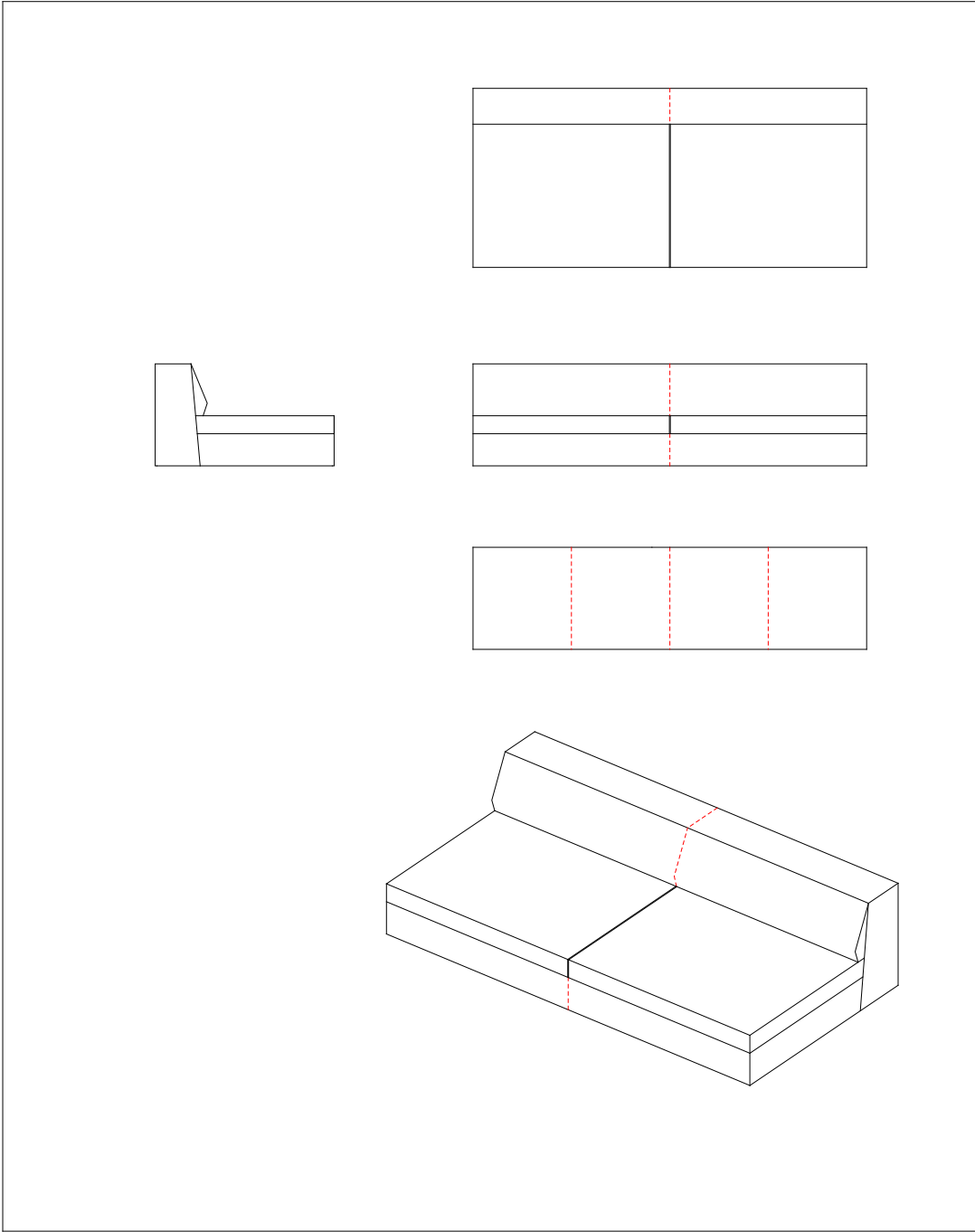
Stitching: Model SAVANNA, center section,
200 x 100 cm in leather, #401-200



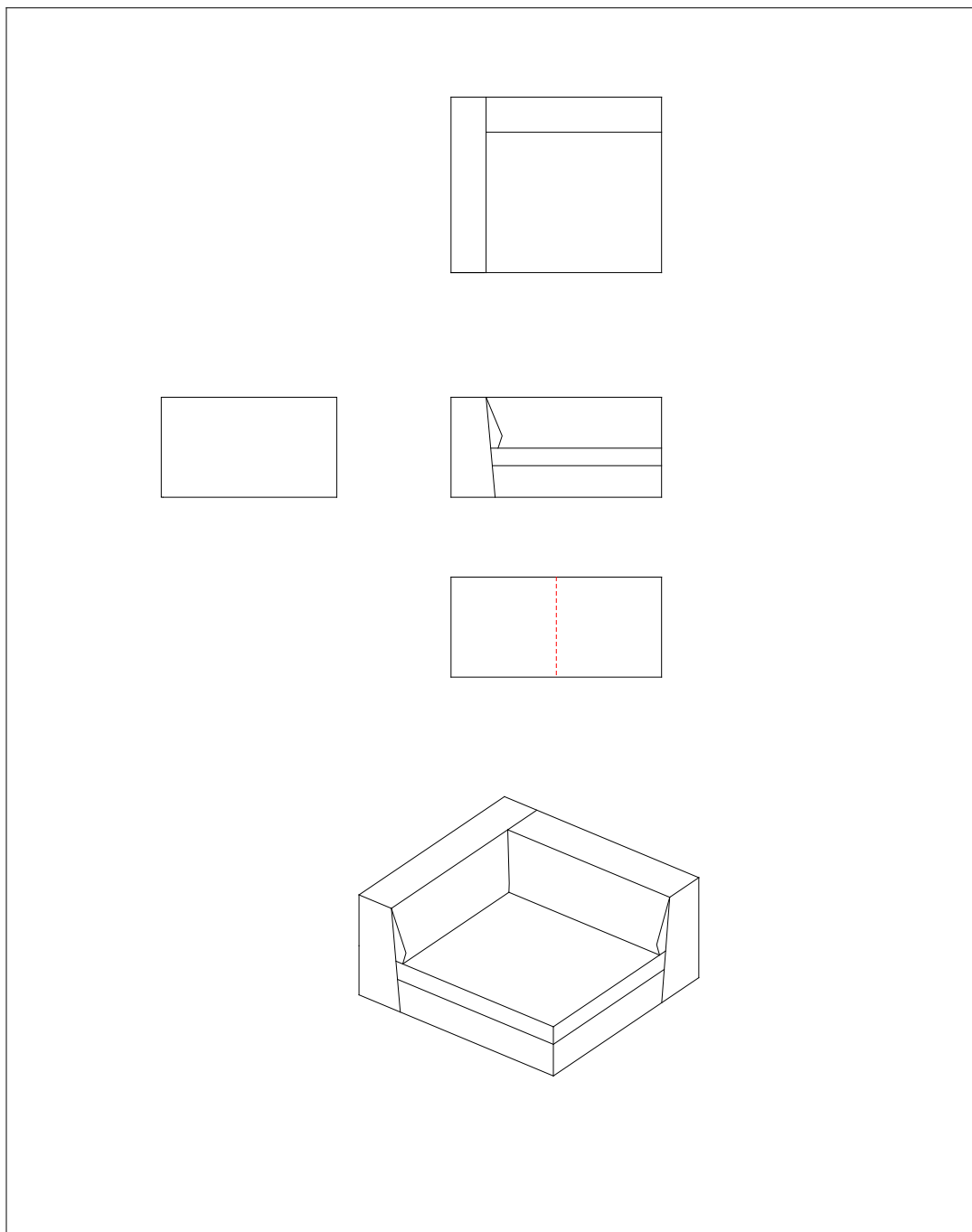
Stitching: Model SAVANNA, center section,
210 x 100 cm in leather, #401-210



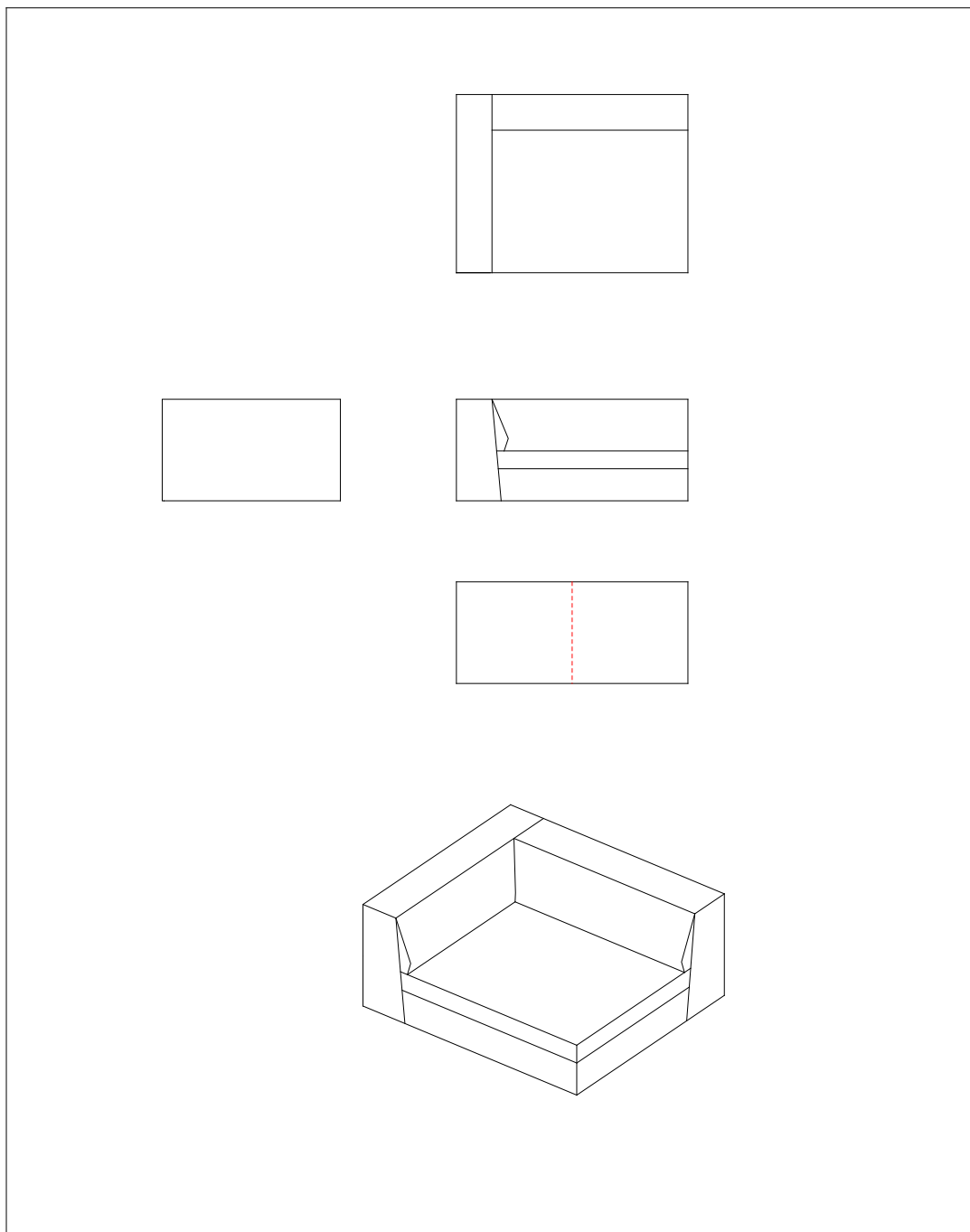
Stitching: Model SAVANNA, center section,
220 x 100 cm in leather, #401-220



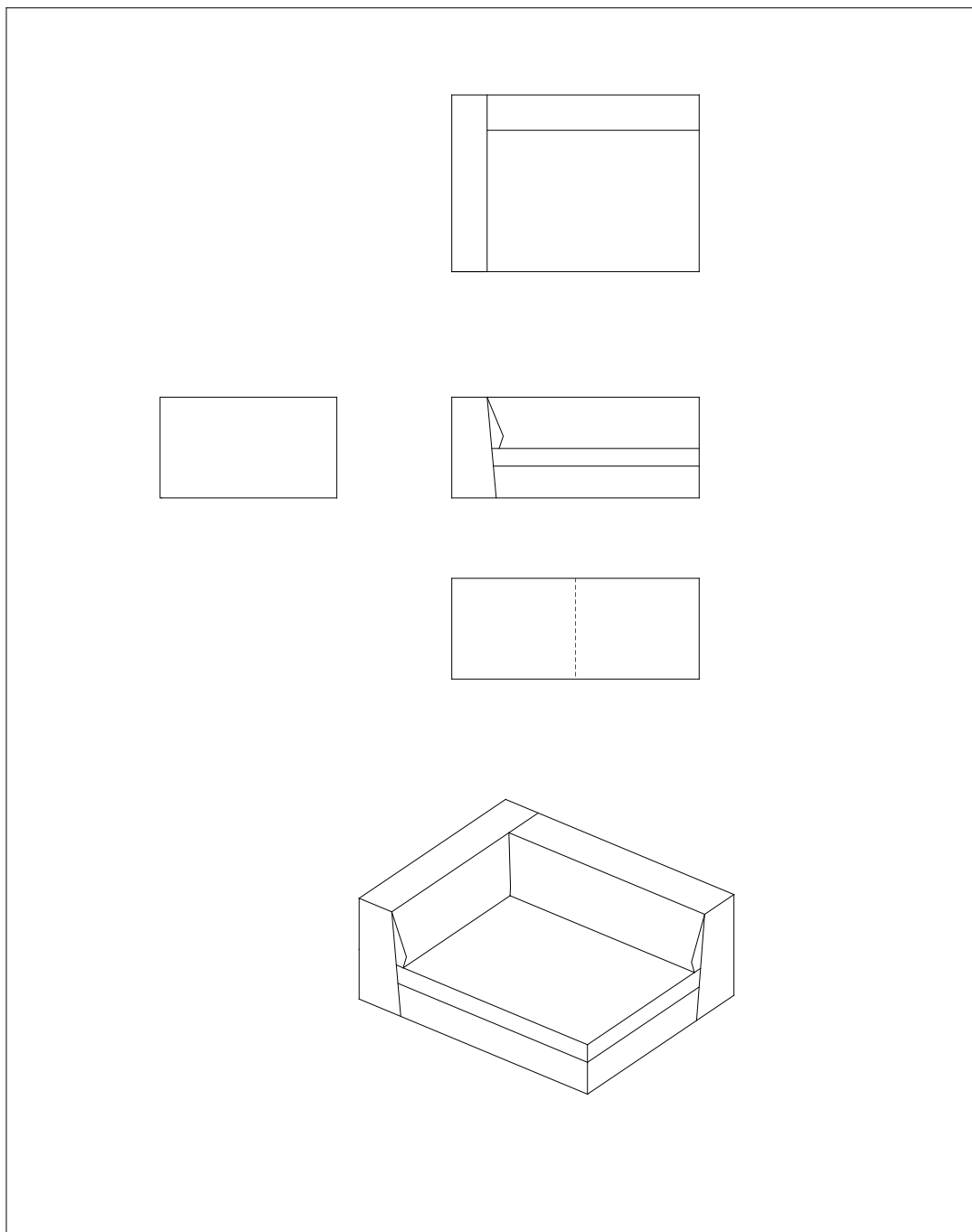
Stitching: Model SAVANNA, closing section, right and left,
120 x 100 cm in leather, #402-120 / #403-120



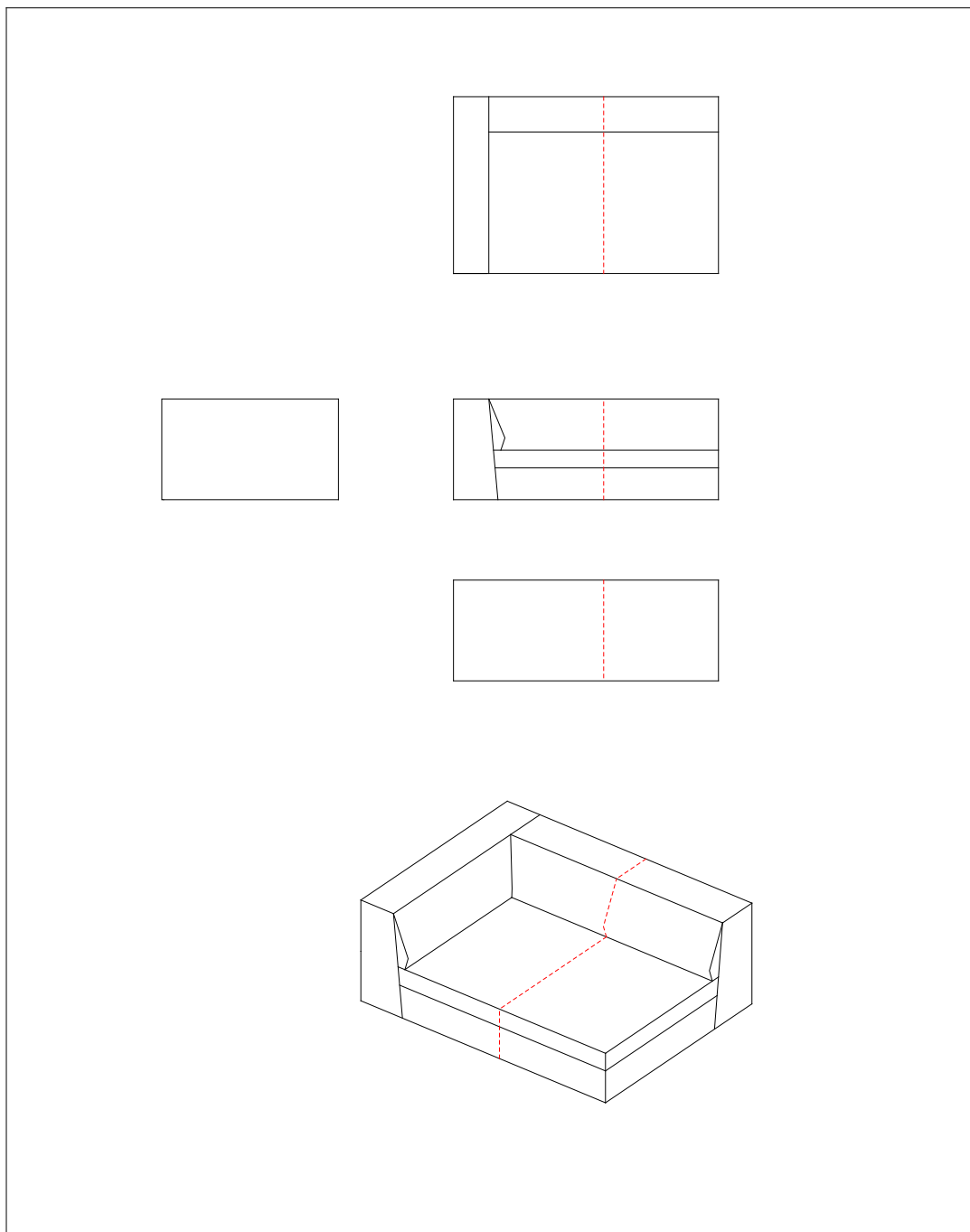
Stitching: Model SAVANNA, closing section, right and left,
130 x 100 cm in leather, #402-130 / #403-130



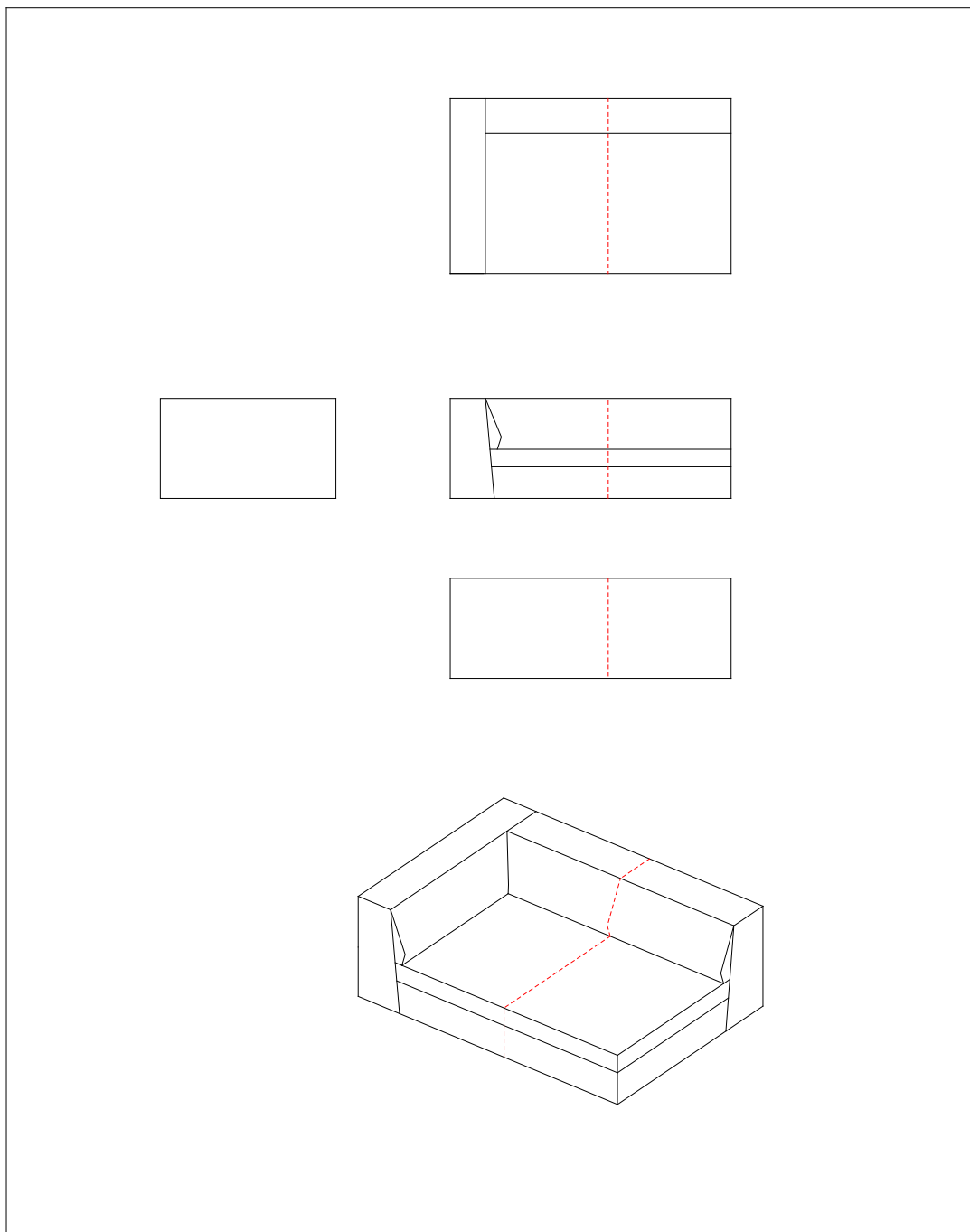
Stitching: Model SAVANNA, closing section, right and left,
140 x 100 cm in leather, #402-140 / #403-140



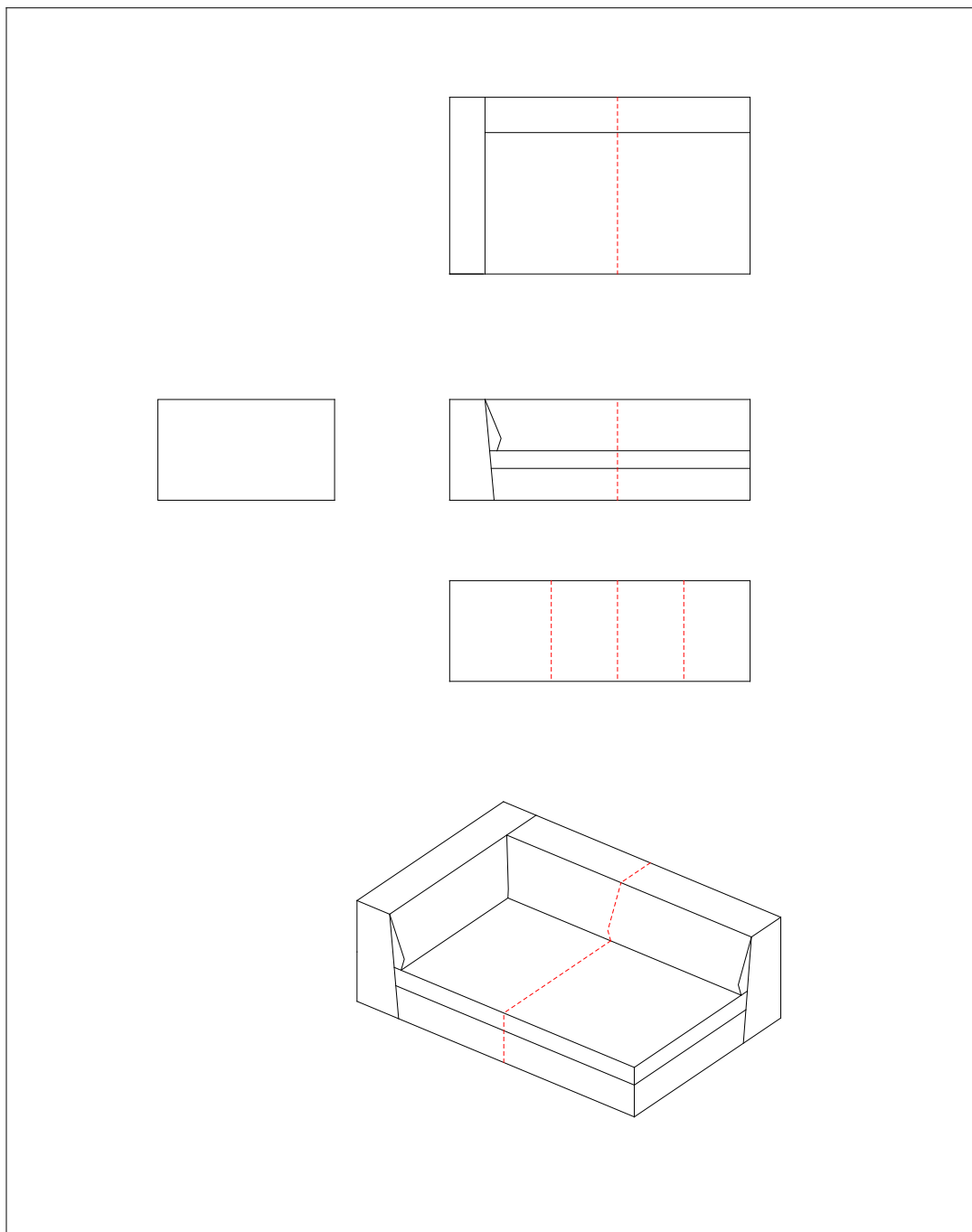
Stitching: Model SAVANNA, closing section, right and left,
150 x 100 cm in leather, #402-150 / #403-150



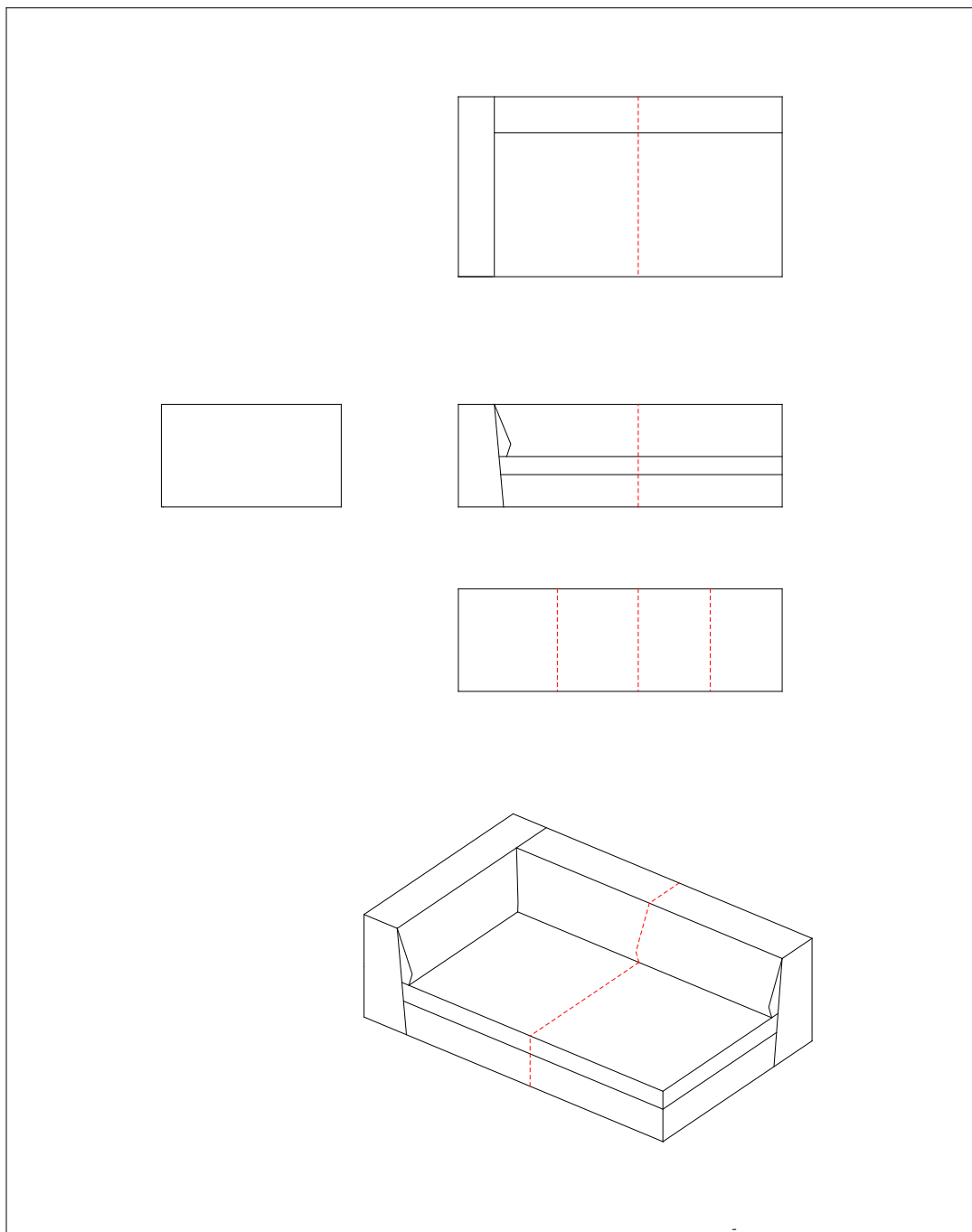
Stitching: Model SAVANNA, closing section, right and left,
160 x 100 cm in leather, #402-160 / #403-160



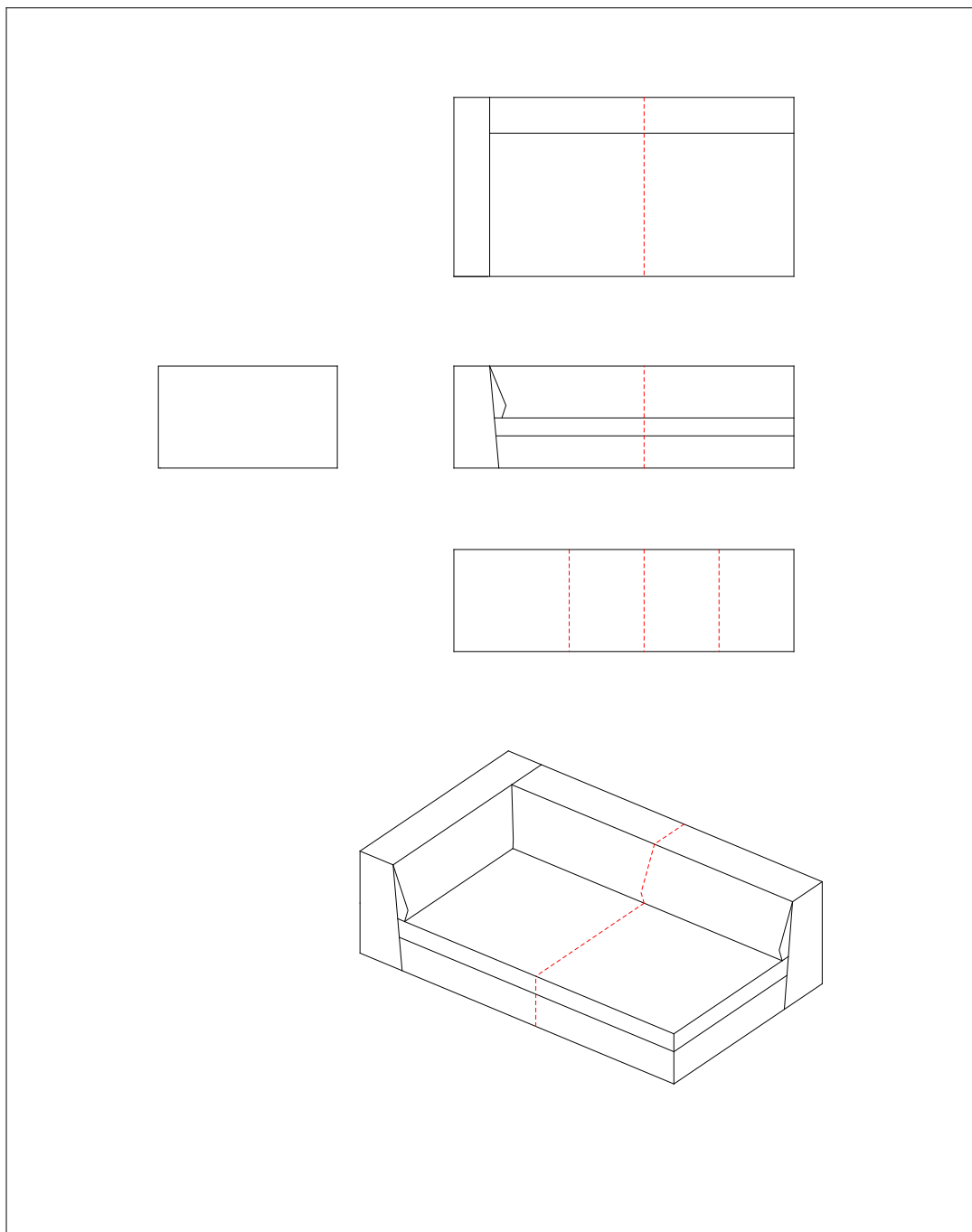
Stitching: Model SAVANNA, closing section, right and left,
170 x 100 cm in leather, #402-170 / #403-170



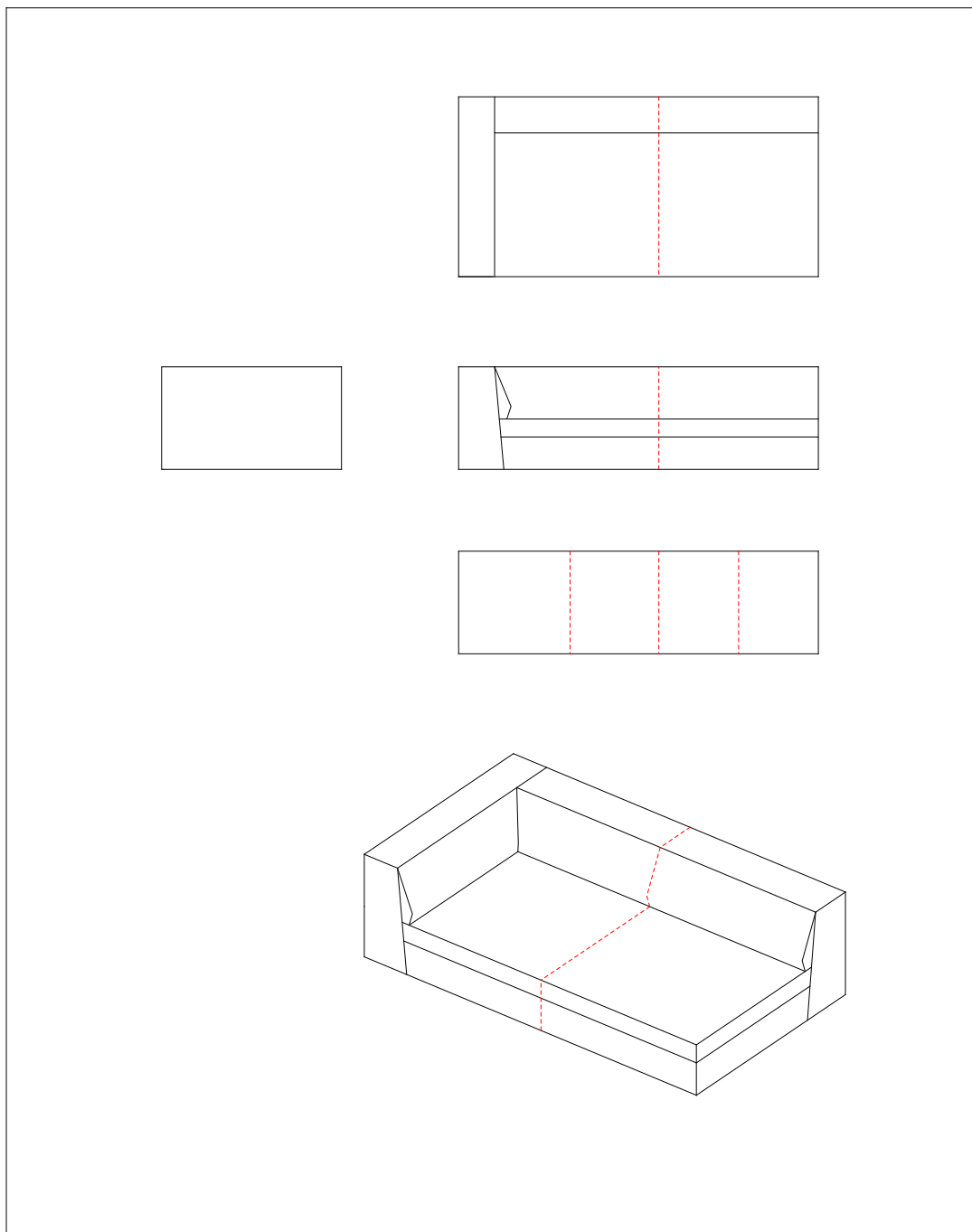
Stitching: Model SAVANNA, closing section, right and left,
180 x 100 cm in leather, #402-180 / #403-180



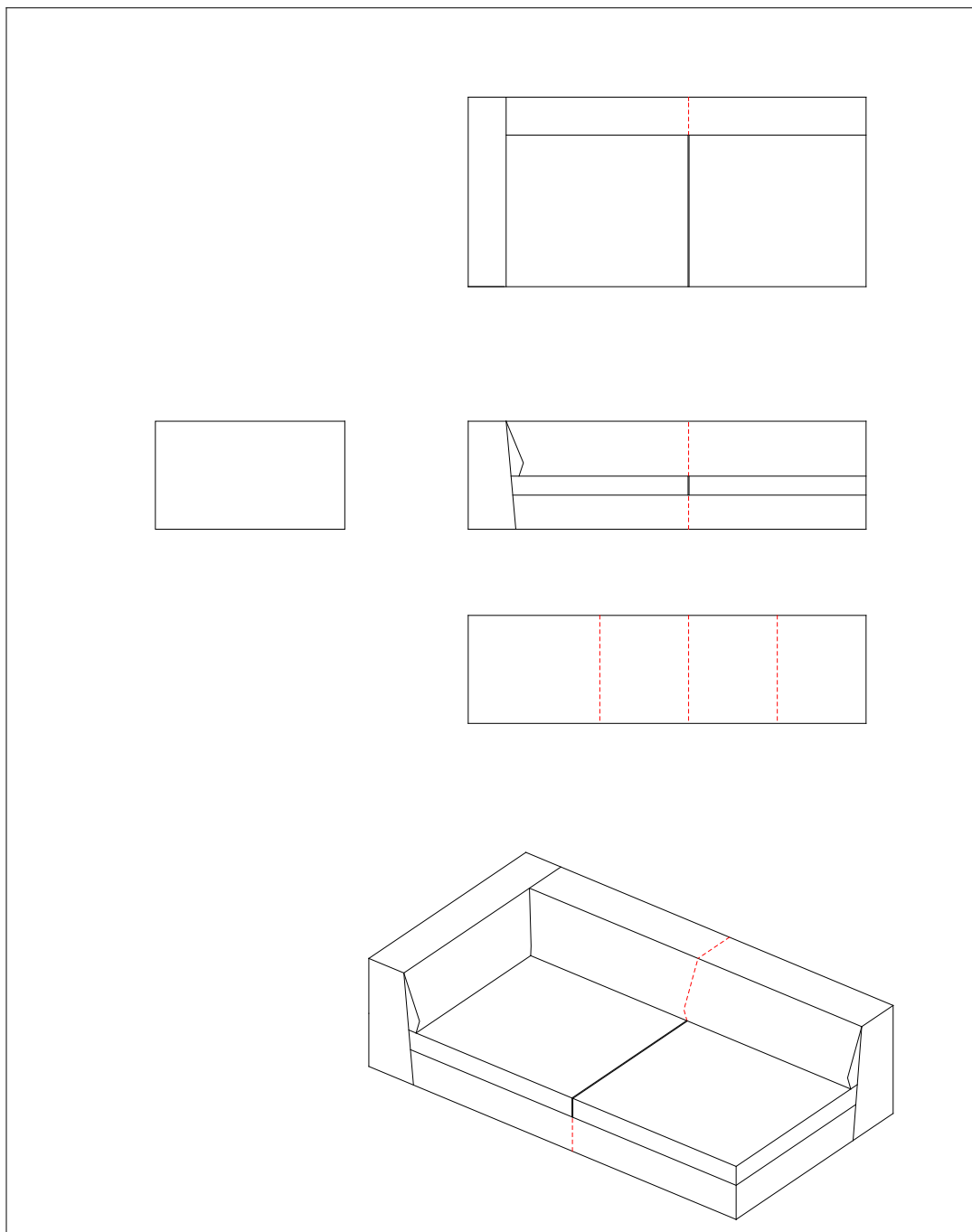
Stitching: Model SAVANNA, closing section, right and left,
190 x 100 cm in leather, #402-190 / #403-190



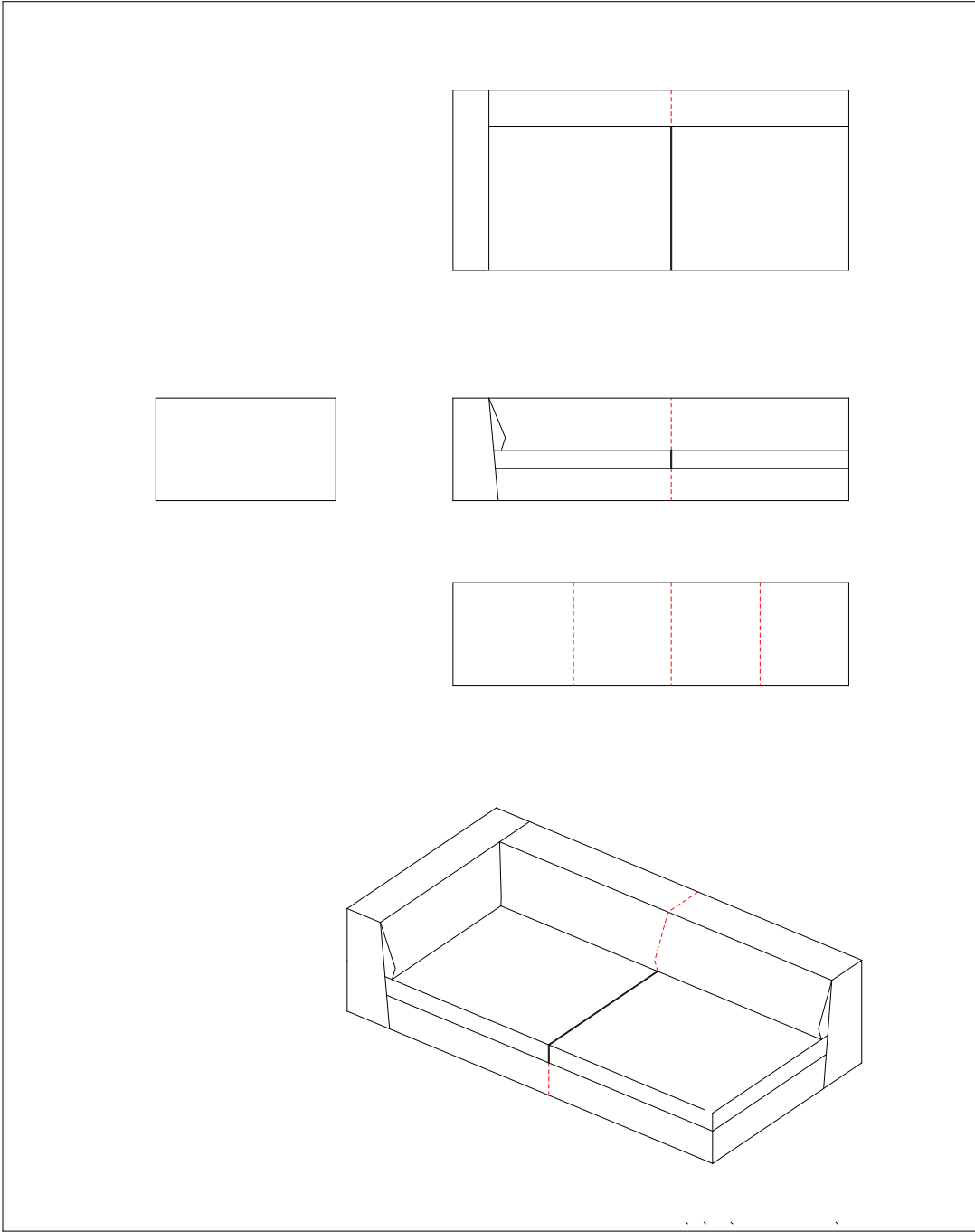
Stitching: Model SAVANNA, closing section, right and left,
200 x 100 cm in leather, #402-200 / #403-200



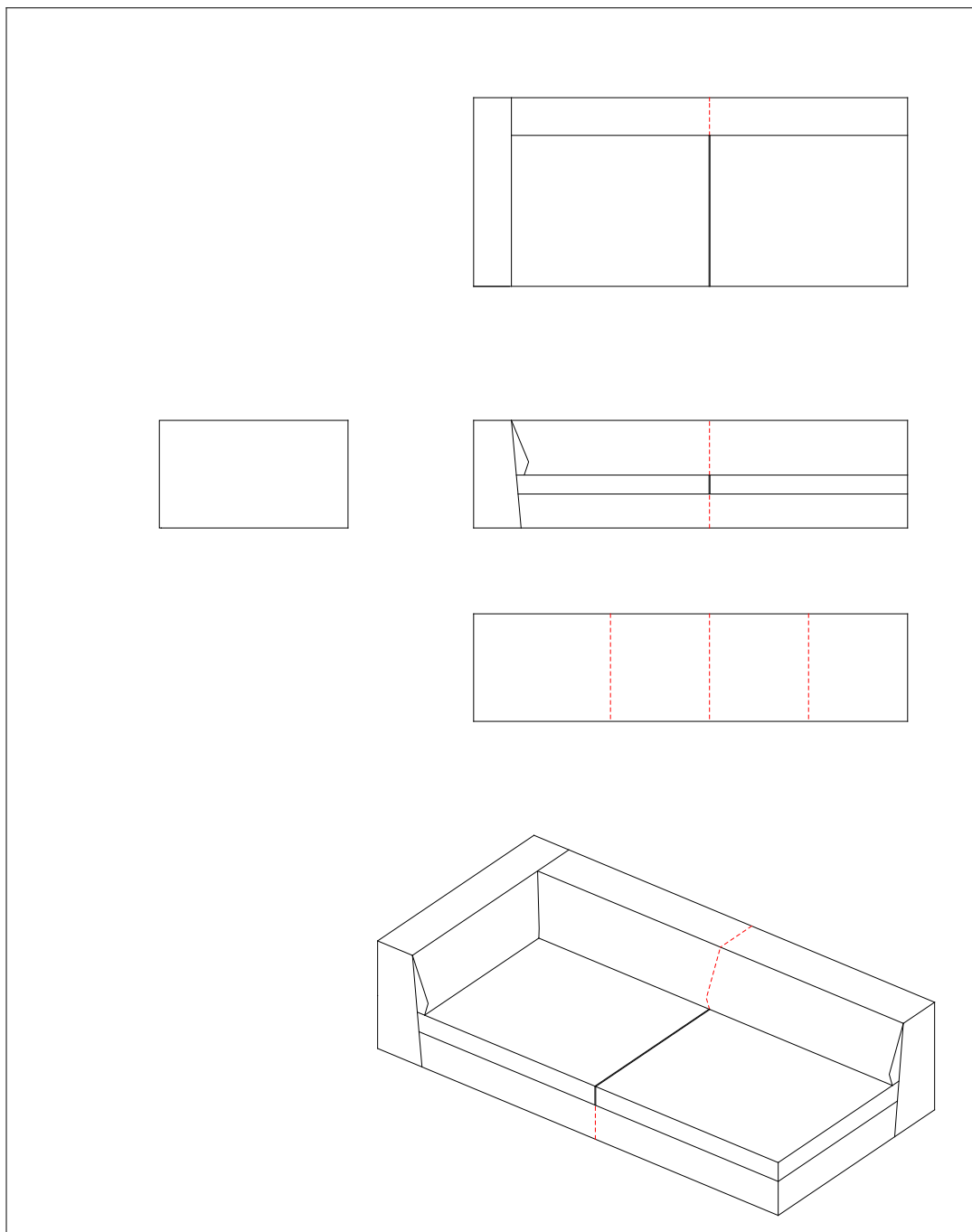
Stitching: Model SAVANNA, closing section, right and left,
210 x 100 cm in leather, #402-210 / #403-210



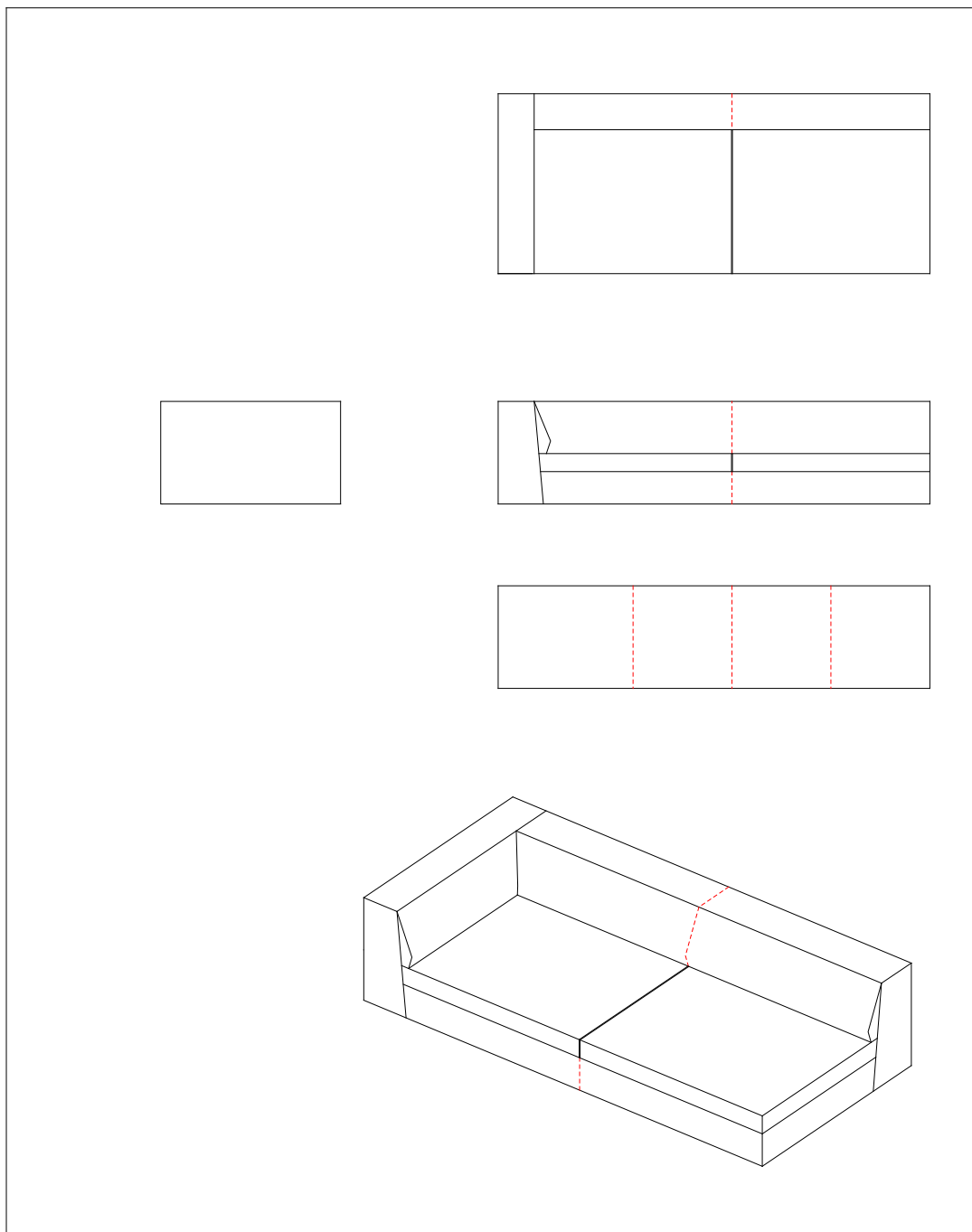
Stitching: Model SAVANNA, closing section, right and left,
220 x 100 cm in leather, #402-220 / #403-220



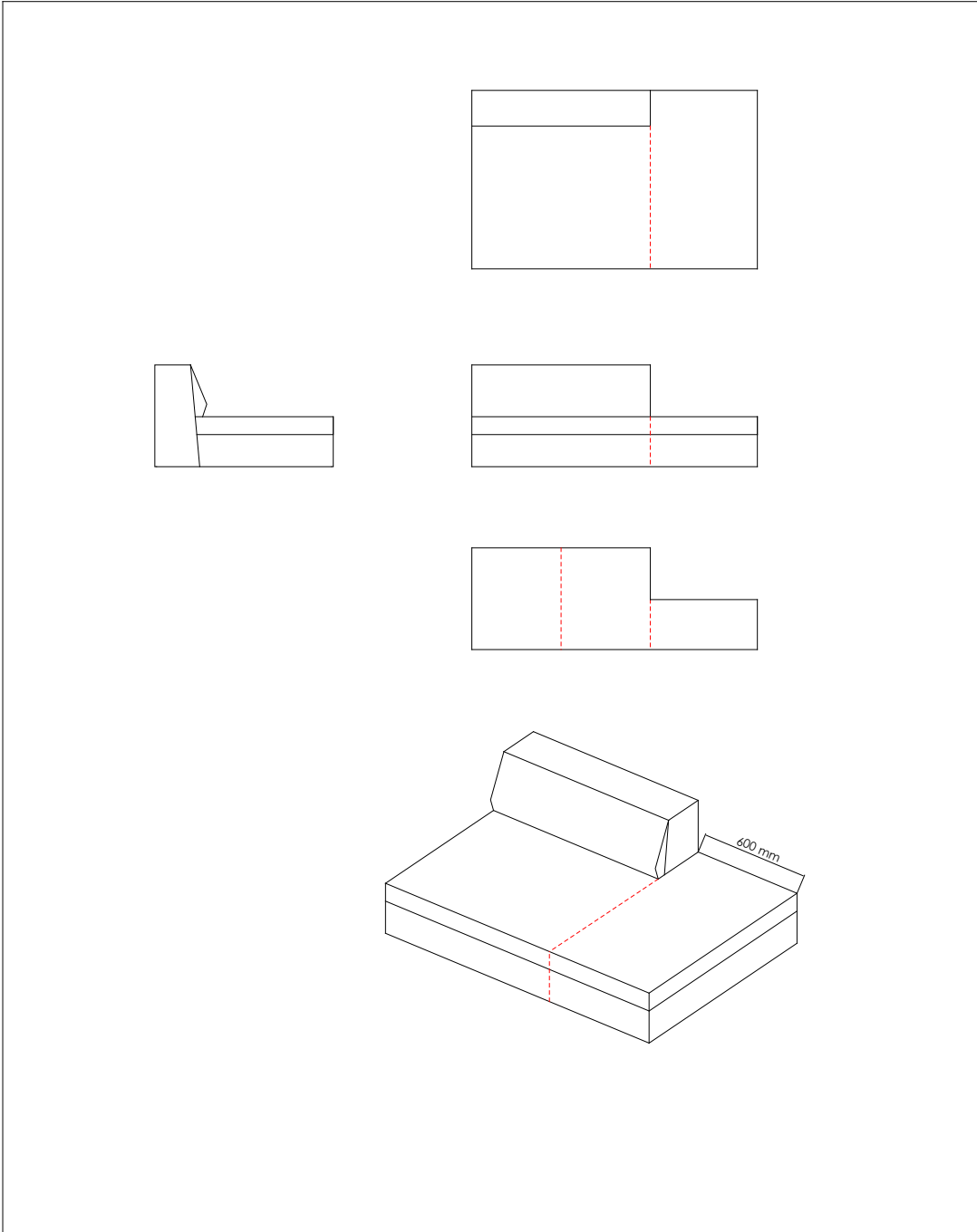
Stitching: Model SAVANNA, closing section, right and left,
230 x 100 cm in leather, #402-230 / #403-230



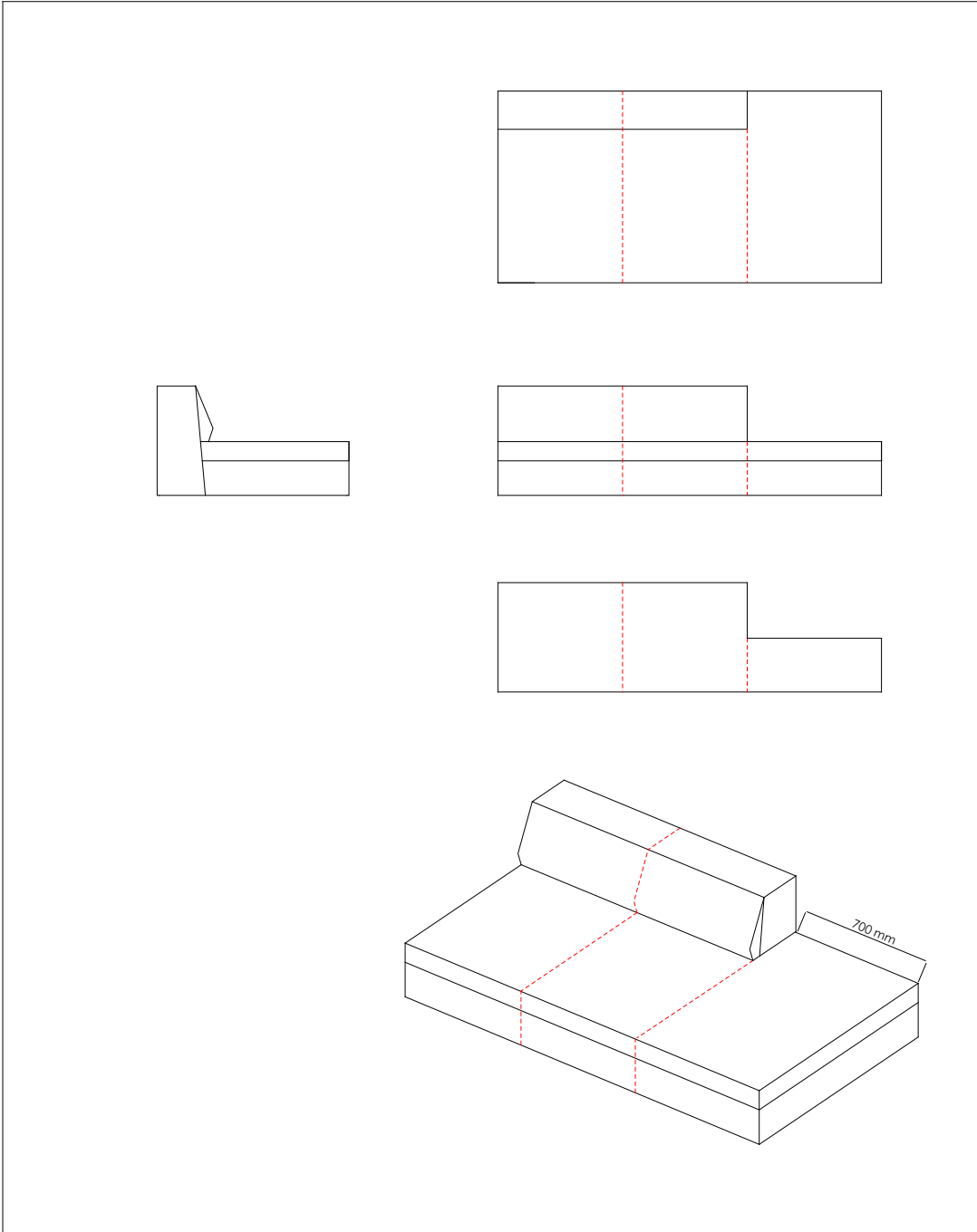
Stitching: Model SAVANNA, closing section, right and left,
240 x 100 cm in leather, #402-240 / #403-240



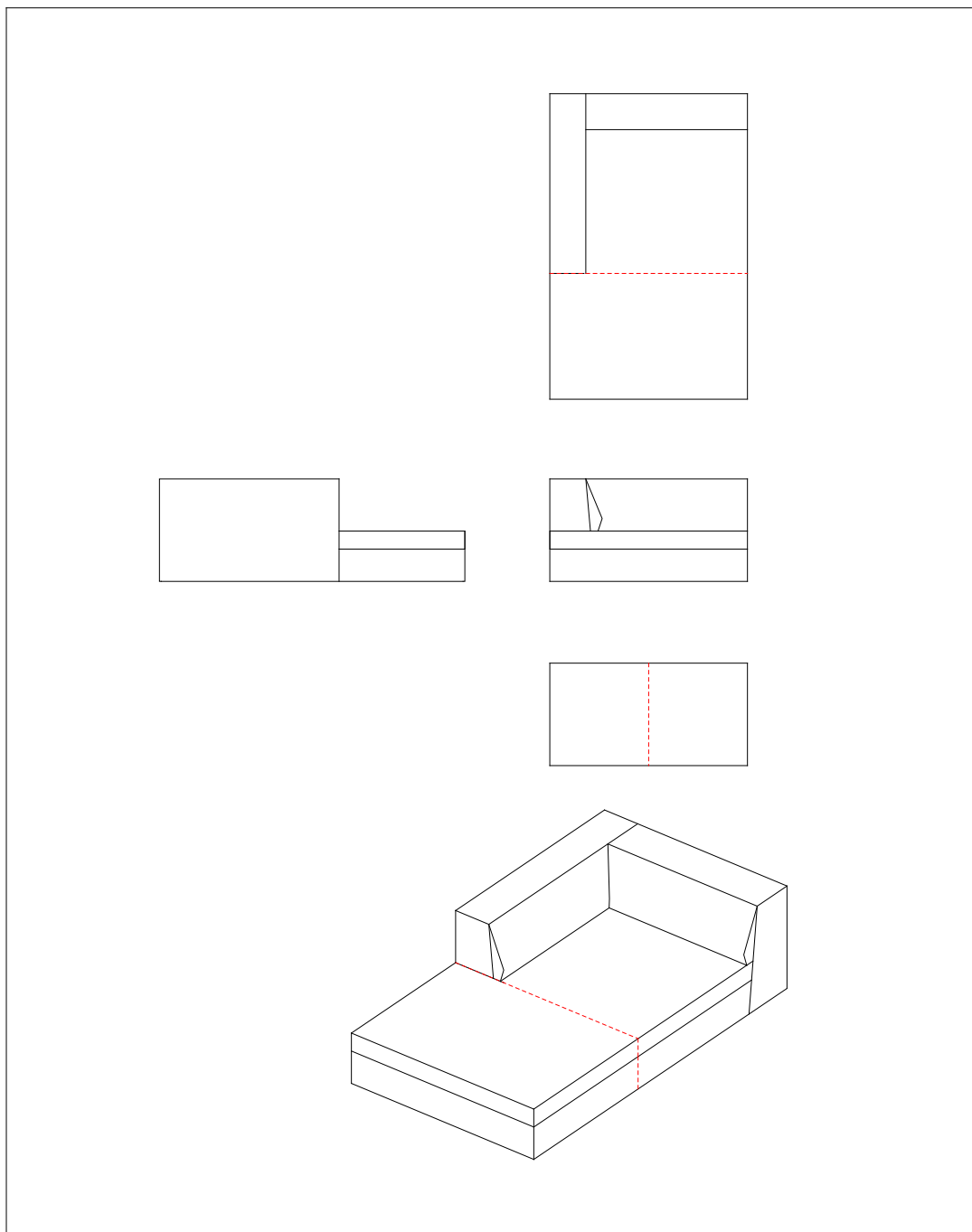
Stitching: Model SAVANNA, center section with short back, right and left,
160 x 100 cm in leather, #412-160 / #413-160



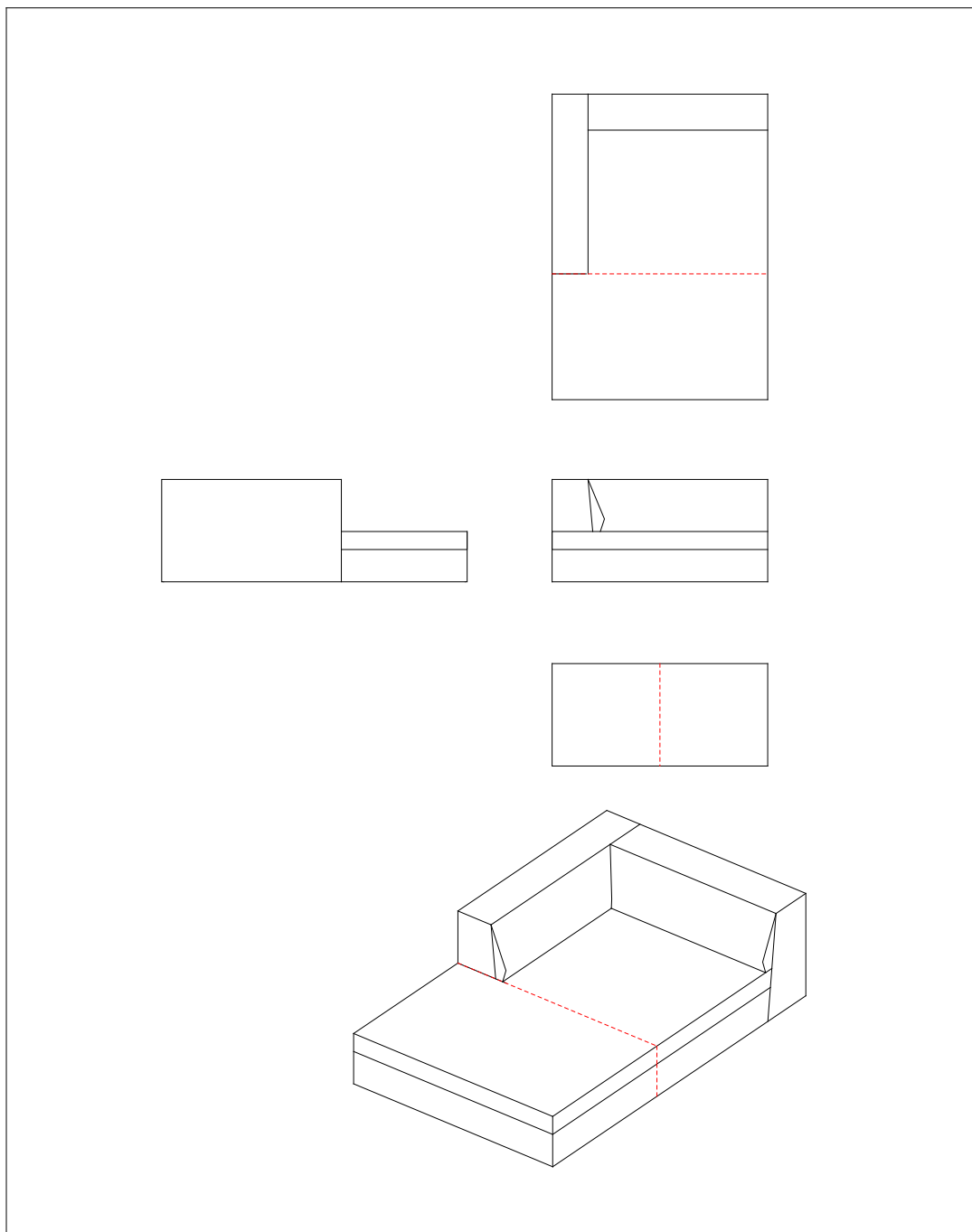
Stitching: Model SAVANNA, center section with short back, right and left,
200 x 100 cm in leather, #412-200 / #413-200



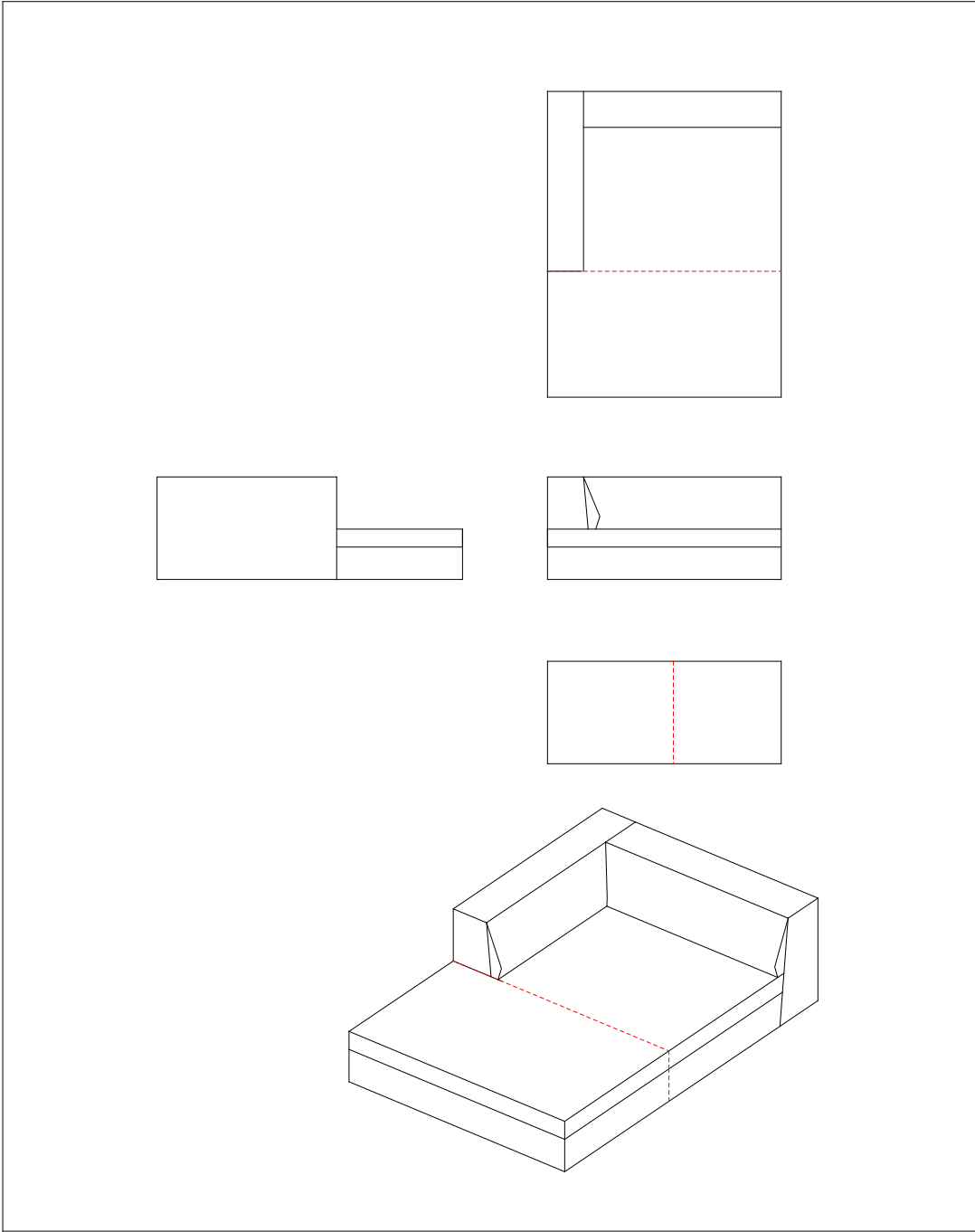
Stitching: Model SAVANNA, chaiselong with arm, right and left,
110 x 170 cm in leather, #406-110 / #407-110



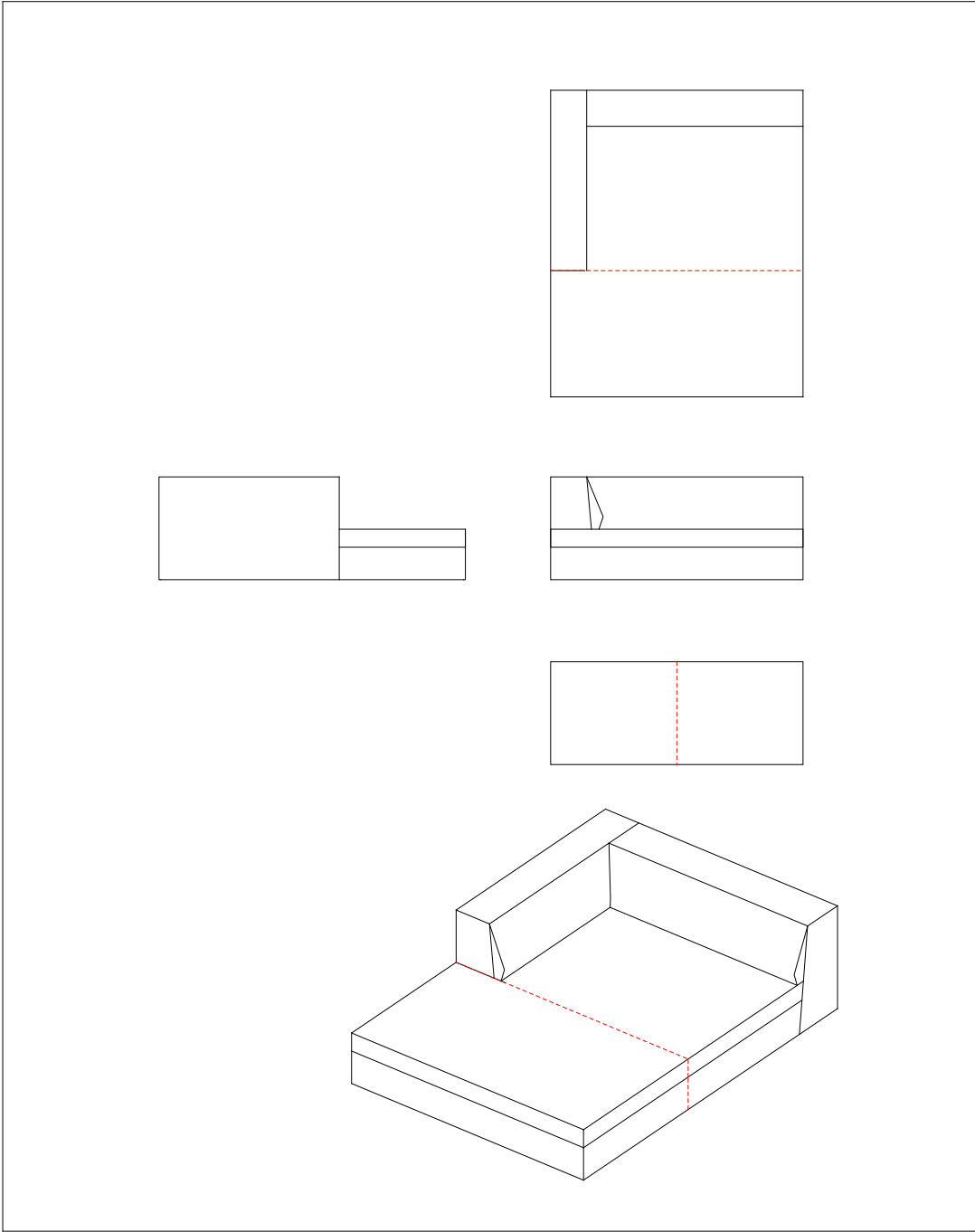
Stitching: Model SAVANNA, chaiselong with arm, right and left,
120 x 170 cm in leather, #406-120 / #407-120



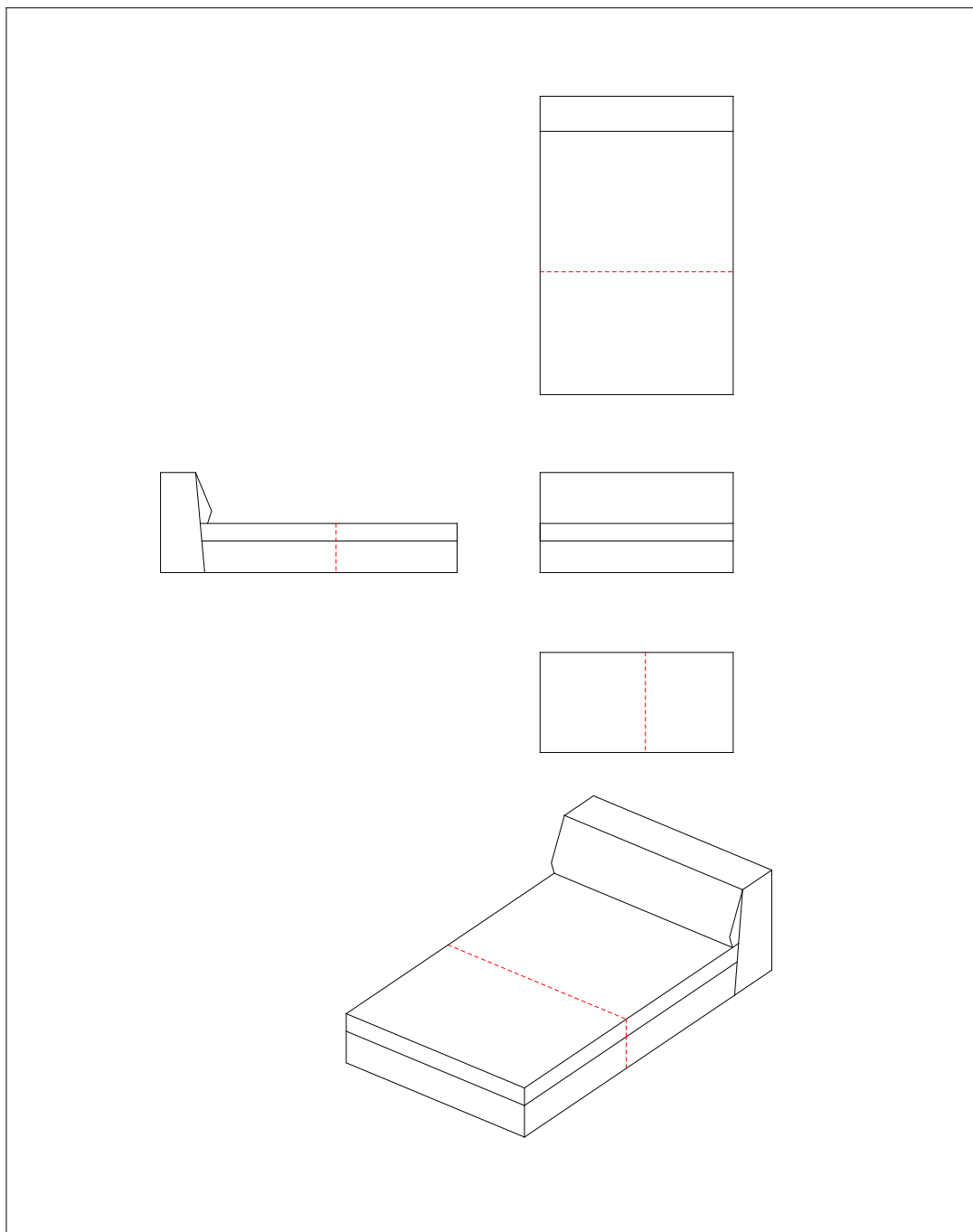
Stitching: Model SAVANNA, chaiselong with arm, right and left,
130 x 170 cm in leather, #406-130 / #407-130



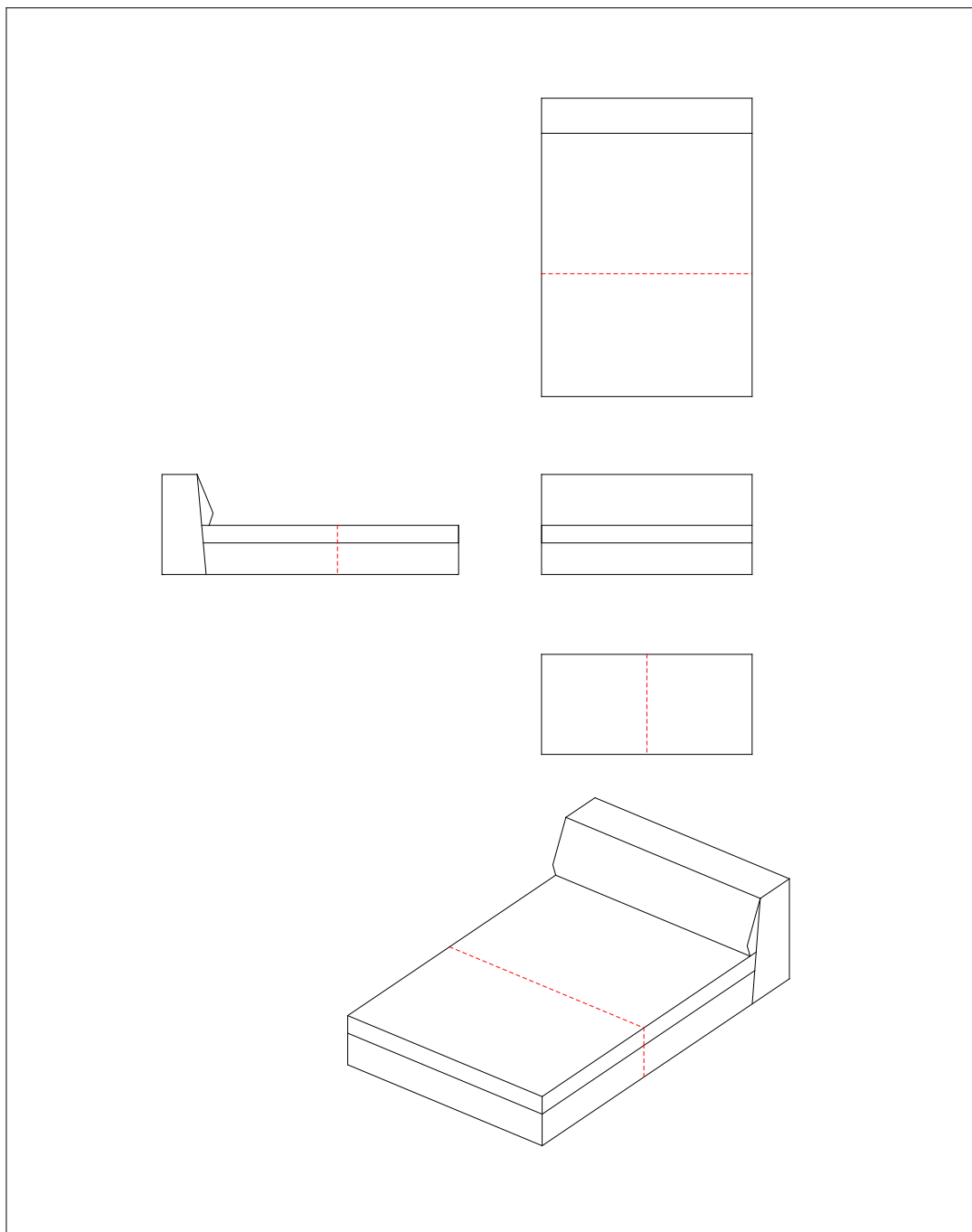
Stitching: Model SAVANNA, chaiselong with arm, right and left,
140 x 170 cm in leather, #406-140 / #407-140



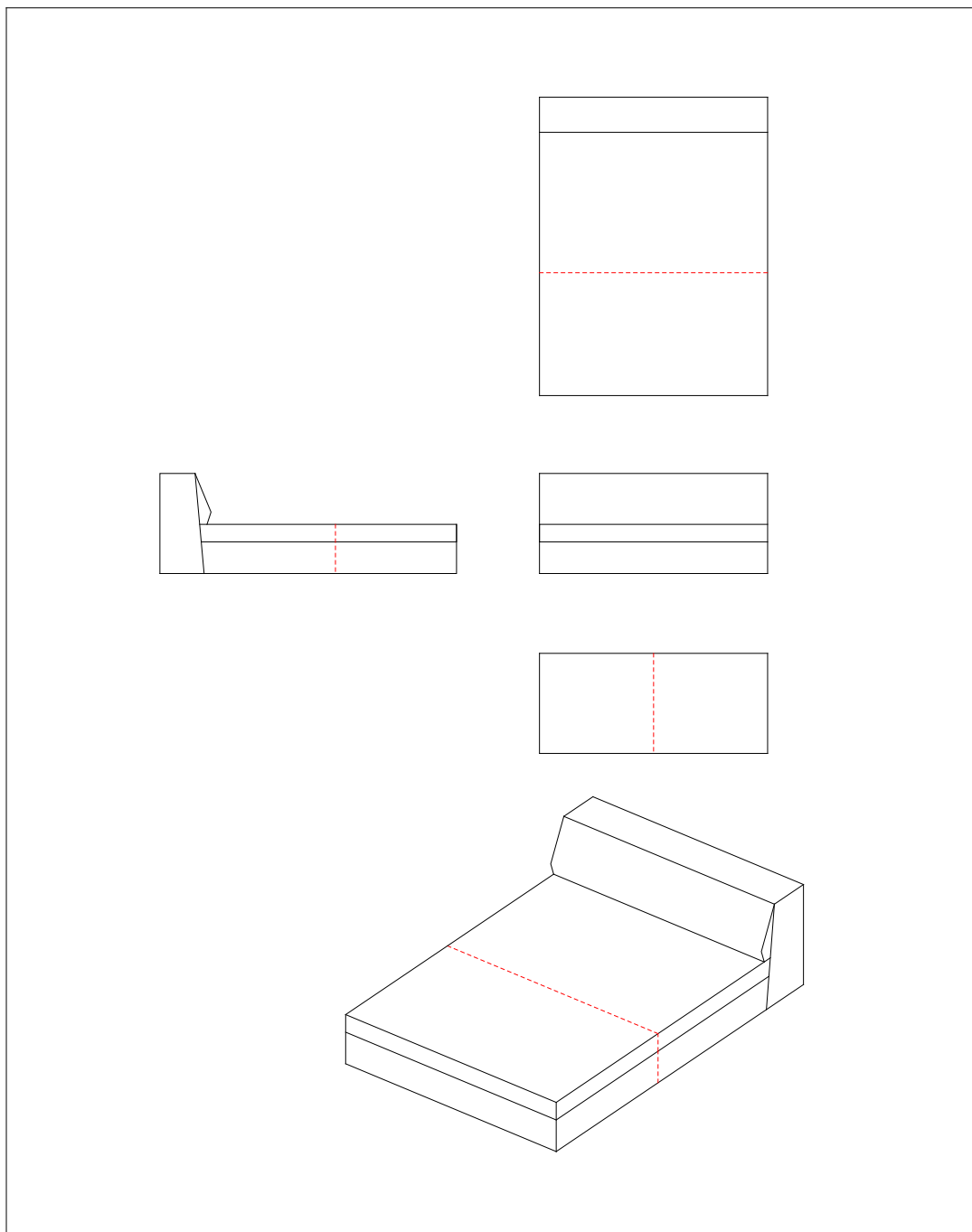
Stitching: Model SAVANNA, chaiselong without arm, right and left,
110 x 170 cm in leather, #406U110 / #407U110



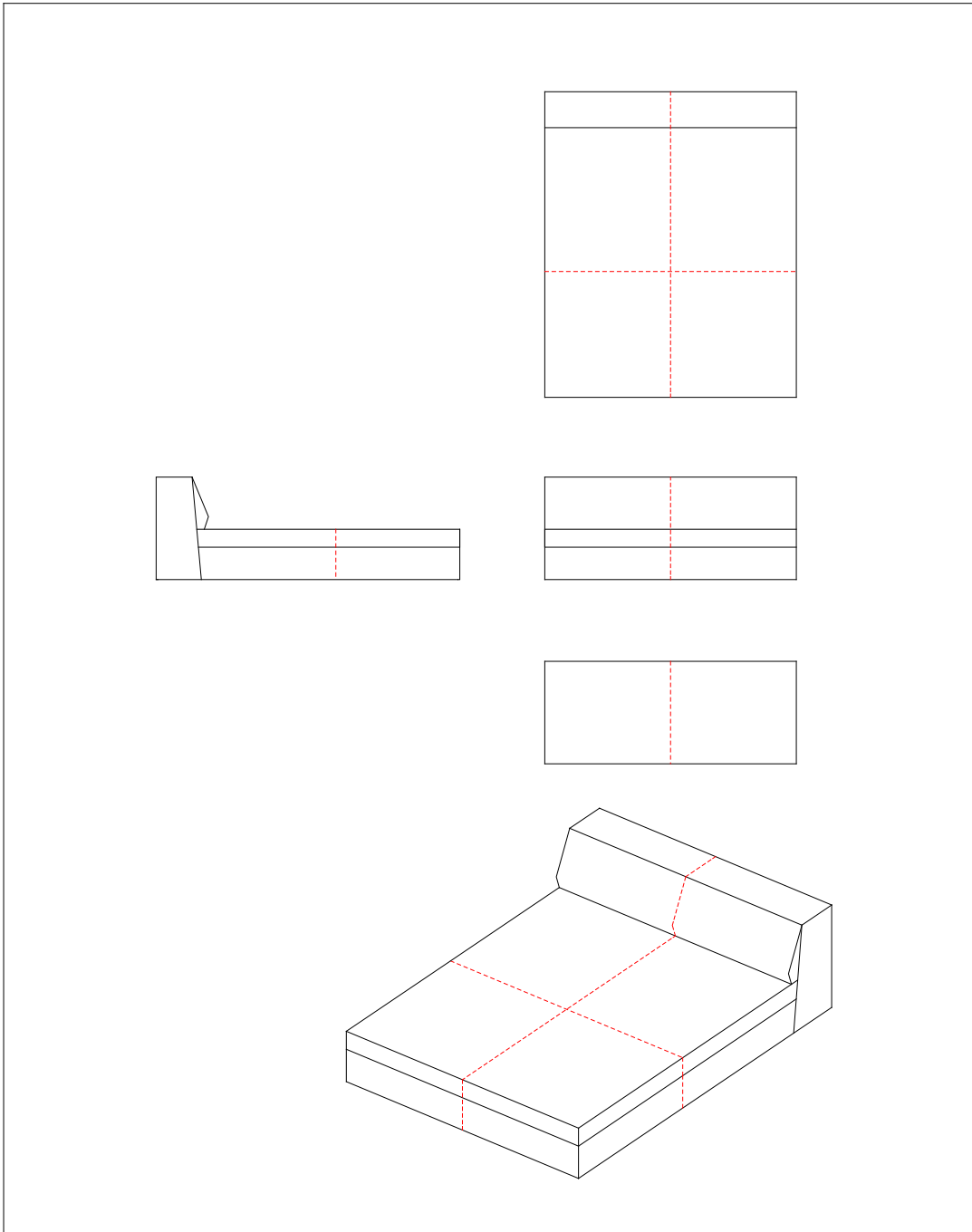
Stitching: Model SAVANNA, chaiselong without arm, right and left,
120 x 170 cm in leather, #406U120 / #407U120



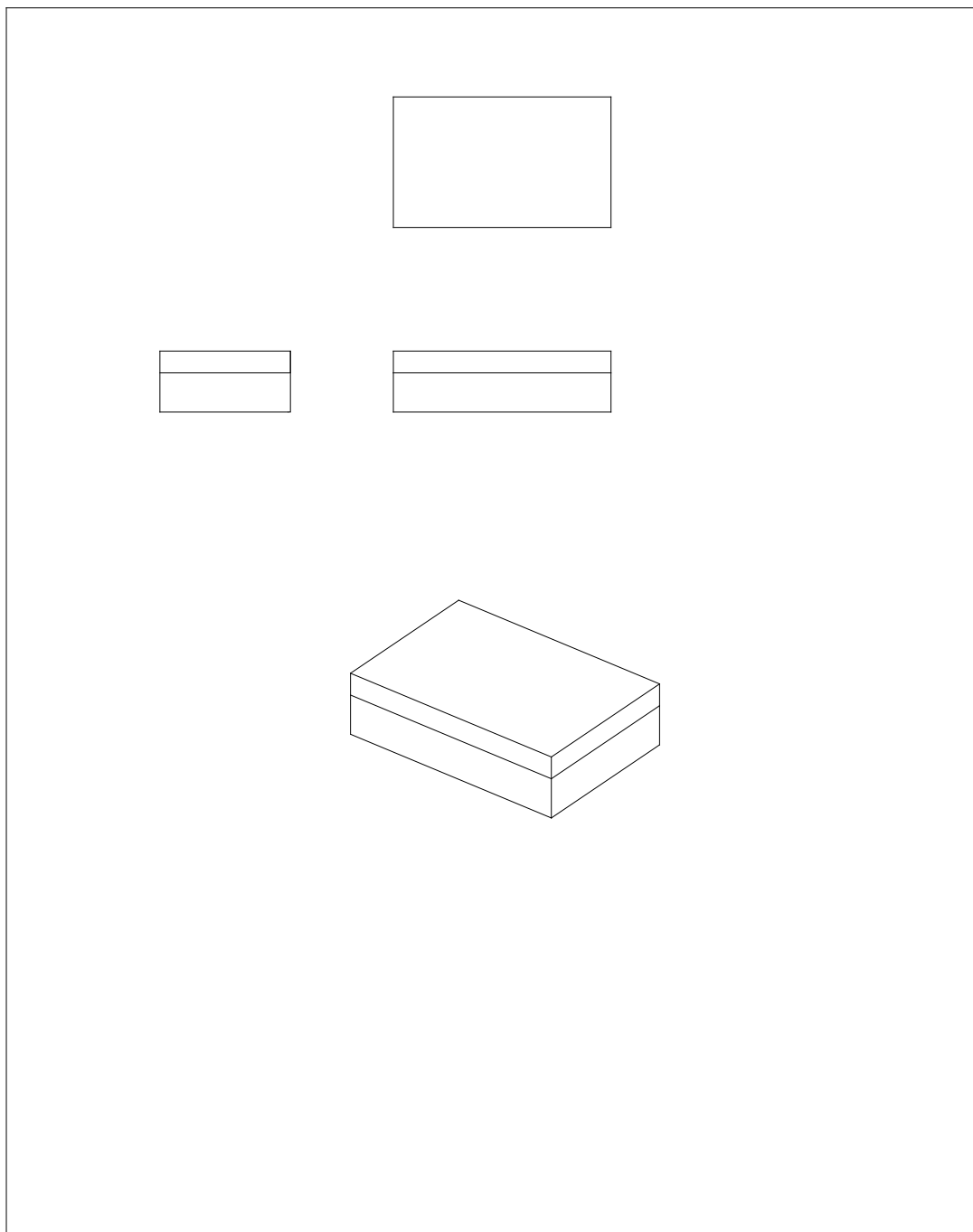
Stitching: Model SAVANNA, chaiselong without arm, right and left,
130 x 170 cm in leather, #406U130 / #407U130



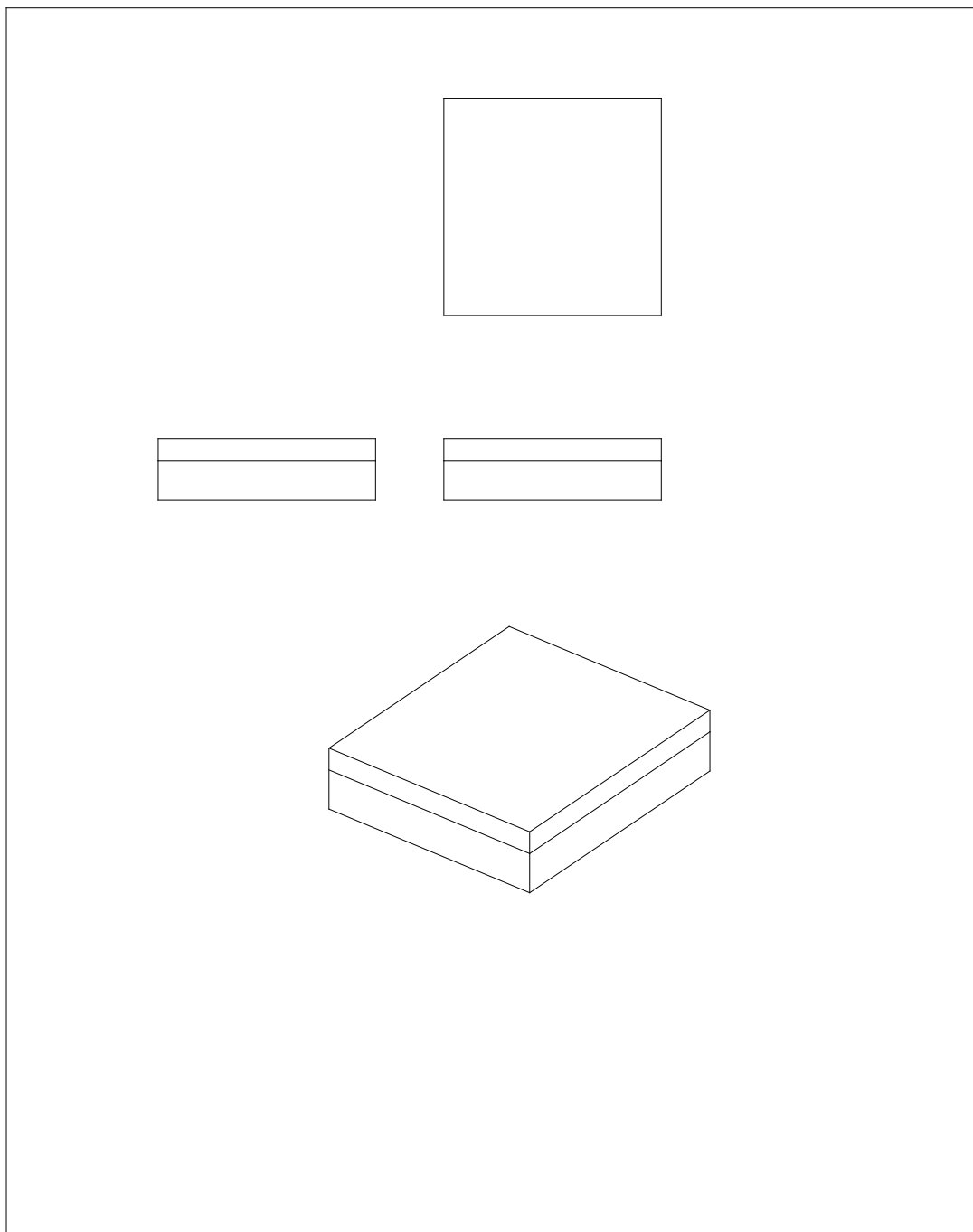
Stitching: Model SAVANNA, chaiselong without arm, right and left,
140 x 170 cm in leather, #406U140 / #407U140



Stitching: Model SAVANNA, footstol,
60 x 100 cm in leather, #4050610



Stitching: Model SAVANNA, footstol,
100 x 100 cm in leather, #4051010



Stitching: Model SAVANNA, footstol,
100 x 150 cm in leather, #4051015

